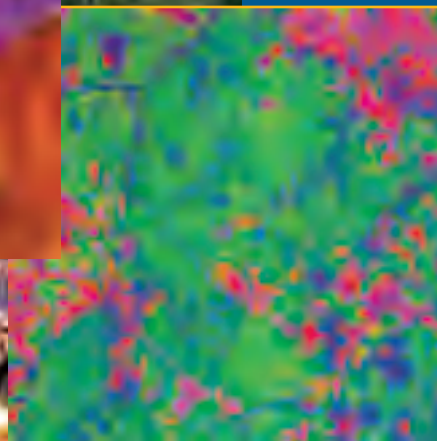
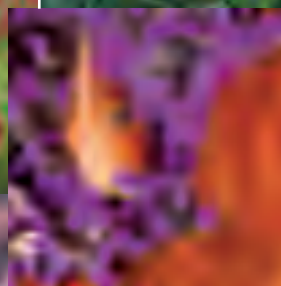


**bioDISCOVERY**

**Assessing, monitoring  
and predicting  
biodiversity change**



**bioDISCOVERY Science Plan  
and Implementation  
Strategy**



**bioDISCOVERY**

a core project of DIVERSITAS

I C S U  
I U B S  
S C O P E  
U N E S C O

## DIVERSITAS



© A Hendry

### Report N°7, **bioDISCOVERY Science Plan and Implementation Strategy**

© **DIVERSITAS 2009 – ISSN: 1813-7105 ISBN: 978-2-9522892-8-5**

Suggested citation: Neville Ash, Norbert Jürgens, Paul Leadley, Rob Alkemade, Miguel B. Araújo, Gregory P. Asner, Dominique Bachelet, Mark J. Costello, Max Finlayson, Sandra Lavorel, Georgina Mace, Harold A. Mooney, Terry Parr, Robert Scholes, Jorge Soberon, Woody Turner, Anne-Hélène Prieur-Richard, Anne Larigauderie, and Bruno A. Walther. 2009.

bioDISCOVERY: Assessing, monitoring and predicting biodiversity change.  
DIVERSITAS Report N°7. 40 pp.

**Cover images credits:** CNRS Photothèque/R Graille, J Cracraft, istockphoto.com/  
J Torborg, G Asner, O Gargominy

#### Contact address

---

##### **Neville Ash, MSc**

IUCN Ecosystem Management  
Programme  
28 rue Mauverney, CH-1196 Gland,  
Switzerland  
Tel: +41 22 999 0273  
Fax: +41 22 364 9622  
Email: [Neville.Ash@iucn.org](mailto:Neville.Ash@iucn.org)

##### **Norbert Jürgens, PhD**

University of Hamburg  
BioCentre Klein Flottbek and  
Botanical Garden  
Ohnhorststreet 18  
22609 Hamburg, Germany  
Tel: +49-40-42816-260  
Fax: +49-40-42816-261  
Email: [Juergens@botanik.uni-hamburg.de](mailto:Juergens@botanik.uni-hamburg.de)  
[Norbert.Juergens@t-online.de](mailto:Norbert.Juergens@t-online.de)

##### **Paul W. Leadley, PhD**

Université Paris-Sud 11  
E.S.E. (Ecologie, Systématique et  
Evolution)  
UMR UPS CNRS, AgroParis Tech 8079  
Bâtiment 362  
Université Paris-Sud 11  
91405 Orsay Cedex, France  
Tel: +33-1-69157222  
Fax: +33-1-69155696  
Email: [paul.leadley@u-psud.fr](mailto:paul.leadley@u-psud.fr)

[www.diversitas-international.org](http://www.diversitas-international.org)

# bioDISCOVERY



© C Clark, National Museum of Natural History,  
Smithsonian Institution

## Assessing, monitoring and predicting biodiversity change

bioDISCOVERY Science Plan and Implementation Strategy

Authors:

Neville Ash, Norbert Jürgens, Paul Leadley, Rob Alkemade, Miguel B. Araújo, Gregory P. Asner, Dominique Bachelet, Mark J. Costello, Max Finlayson, Sandra Lavorel, Georgina Mace, Harold A. Mooney, Terry Parr, Robert Scholes, Jorge Soberon, Woody Turner, Anne-Hélène Prieur-Richard, Anne Larigauderie, and Bruno A. Walther.

*Approved by the Scientific Committee of DIVERSITAS*





## Preface



© C Körner

We are proud to have participated in the delivery of the bioDISCOVERY science plan following a long period of gestation. The initial meetings for laying the foundation for a DIVERSITAS Core Project covering the "origins and maintenance of biodiversity" were held several years ago. But what initially seemed like a reasonable piece of the overall DIVERSITAS science plan was in reality exceptionally rich and extremely ambitious. Over time, the original plan has given rise to two science plans: "bioGENESIS: providing an evolutionary framework for biodiversity science" and "bioDISCOVERY: assessing, monitoring and predicting biodiversity change". We encourage you to read them both.

Our motivation for encouraging and doing the science outlined in this document has never waned because we are convinced that the scientific community cannot continue doing business as usual if we are to slow the decline in biodiversity. We are currently faced with a very troubling situation. On one hand, the scientific community has good evidence that the decline in biodiversity is occurring at ever increasing rates, the public is sensitive to the loss of biodiversity, and decision makers have put in place national and international treaties to conserve biodiversity and ensure its sustainable use. On the other hand, there has been very limited progress in slowing the decline of biodiversity at the global scale, and in many situations the rate of decline of biodiversity is increasing. So we are confronted with several vexing questions. Can we demonstrate unequivocally

that biodiversity is declining at unprecedented rates? What will be the impacts on human well-being if the erosion of biodiversity continues unabated? Why isn't science playing a more important role in decision making, and promoting stronger action for biodiversity? Putting the bioDISCOVERY science plan into action would provide a means of addressing these questions.

We hope this document speaks to the whole of the scientific community. Many scientists have participated in its conception, so we believe that this plan reflects a broad consensus concerning the steps necessary to make breakthroughs in assessing, monitoring, understanding and predicting biodiversity change. The plan of action outlined in this document is ambitious and, therefore, must rely on the mobilisation of the entire scientific community to be successful. Developing the international biodiversity science plan is the first step. But real achievement will only come from taking it forwards, and delivering on its contents. We look forward to doing so, and hope that you will join us.

**Neville Ash, Norbert Jürgens, Paul Leadley**  
*Co-chairs, bioDISCOVERY*

**Harold A. Mooney**  
*Chair, Scientific Committee DIVERSITAS*

**Anne Larigauderie**  
*Executive Director, DIVERSITAS*



© C Körner

### Co-chairs

**Neville Ash**  
IUCN Ecosystem Management  
Programme  
Switzerland

**Norbert Jürgens**  
BioCentre Klein Flottbek and  
Botanical Garden  
University of Hamburg  
Germany

**Paul Leadley**  
Laboratoire d'Ecologie,  
Systématique et Evolution (ESE)  
Université Paris-Sud 11, Orsay  
France

### Scientific Committee Members

**Rob Alkemade**  
Netherlands Environmental  
Assessment Agency (MNP)  
Nature, Landscape and Biodiversity  
The Netherlands

**Miguel B. Araújo**  
Departamento de Biodiversidad y  
Biología Evolutiva  
Museo Nacional de Ciencias  
Naturales  
Spain

**Gregory P. Asner**  
Department of Global Ecology  
Carnegie Institution  
USA

**Dominique Bachelet**  
Department of Biological and  
Ecological Engineering  
Oregon State University  
USA

**Mark J. Costello**  
Leigh Marine Laboratory  
University of Auckland  
New Zealand

**Max Finlayson**  
Wetlands Ecology  
IWMI  
Sri Lanka

**Sandra Lavorel**  
CNRS  
Université Joseph Fourier  
Grenoble  
France

**Terry Parr**  
Centre for Ecology and Hydrology  
Lancaster Environment Centre  
UK

**Jorge Soberon**  
Division of Ornithology  
University of Kansas  
USA

**Woody Turner**  
Earth Science Division  
NASA  
USA

### SC-DIVERSITAS Members

**Georgina Mace**  
Vice-Chair SC-DIVERSITAS  
NERC Centre for Population  
Biology  
Imperial College  
UK

**Harold Mooney**  
Chair SC-DIVERSITAS  
Department of Biological Sciences  
Stanford University  
USA

**Robert Scholes**  
Vice-Chair SC-DIVERSITAS  
Council for Scientific and  
Industrial Research  
Environmentek, Natural Resources  
and Environment  
South Africa



© C Körner

<b>I - DIVERSITAS</b>	<b>6</b>
<b>II - The bioDISCOVERY Science Plan</b>	
<b>Overview</b>	<b>8</b>
<b>FOCUS 1.</b> Strengthening biodiversity assessment	<b>11</b>
<b>Research TASK 1.1</b> Heterogeneous data sources are integrated into biodiversity assessments	
<b>Research TASK 1.2</b> Biodiversity change is credibly interpreted, including through the use of indicators	
<b>Research TASK 1.3</b> Scientifically rigorous, novel and rapid biodiversity assessment approaches are developed	
<b>Research TASK 1.4</b> Robust evaluation of uncertainty is provided in biodiversity assessments	
<b>FOCUS 2.</b> Improving observation and understanding biodiversity change	<b>14</b>
<b>Research TASK 2.1</b> Biodiversity observation incorporates a broad set of measures of environmental and socio-economic drivers, biodiversity change and ecosystem services	
• <b>Task 2.1.1</b> <i>Environmental and socioeconomic drivers of biodiversity change are integrated into biodiversity observations</i>	
• <b>Task 2.1.2</b> <i>Biodiversity observation incorporates a broad set of measures of biodiversity</i>	
• <b>Task 2.1.3</b> <i>Measurements of ecosystem services are linked to biodiversity observations</i>	
<b>Research TASK 2.2</b> Interoperability between biogeographical, remote sensing, ecosystem process and population dynamics data is enhanced	
<b>Research TASK 2.3</b> Experimental, modeling and observation data are integrated to improve understanding of the mechanisms of biodiversity change	
<b>FOCUS 3.</b> Improving biodiversity projections	<b>20</b>
<b>Research TASK 3.1</b> Quantitative projections of future biodiversity change are improved and explicitly treat multiple sources of uncertainty	
• <b>Task 3.1.1</b> <i>Stronger links are established with researchers developing scenarios of factors driving biodiversity change</i>	
• <b>Task 3.1.2</b> <i>Emerging drivers of biodiversity such as genetically modified organisms (GMOs) and biofuels are included in projections of biodiversity change</i>	
• <b>Task 3.1.3</b> <i>Treatment of uncertainty in projections is improved</i>	
• <b>Task 3.1.4</b> <i>Novel approaches to modelling biodiversity response are developed</i>	
• <b>Task 3.1.5</b> <i>Generalised, modular modelling frameworks are tested</i>	
<b>Research TASK 3.2</b> Projections of biodiversity change will be linked to ecosystem services and to decision making	
• <b>Task 3.2.1</b> <i>Biodiversity projections are broadened to include more emphasis on ecosystem services</i>	
• <b>Task 3.2.2</b> <i>Stronger dialogs are established with stakeholders, especially natural resource managers</i>	
<b>III - Implementation Strategy</b>	<b>27</b>
<b>IV - References</b>	<b>29</b>
<b>V - Acknowledgements</b>	<b>38</b>
<b>VI - List of Acronyms</b>	<b>40</b>

## I

DIVERSITAS is an international, non-governmental programme under the auspices of ICSU, IUBS, SCOPE and UNESCO (see side bar), that addresses the complex scientific questions posed by the loss of and change in global biodiversity. By connecting individuals across natural and social science disciplines, and across national or regional boundaries it addresses issues of global concern, thereby adding value to research projects being undertaken around the world at the national and disciplinary levels.

In accordance with the mandate developed by its sponsoring bodies, the mission of DIVERSITAS is two-fold:

- To promote an integrative biodiversity science, linking biological, ecological and social disciplines in an effort to produce socially relevant new knowledge.
- To provide the scientific basis for the conservation and sustainable use of biodiversity.

### DIVERSITAS Sponsors

- International Council for Science (ICSU)
- International Union of Biological Sciences (IUBS)
- Scientific Committee on Problems of the Environment (SCOPE)
- United Nations Educational, Scientific and Cultural Organisation (UNESCO)

### Scientific Core Projects

The primary means by which DIVERSITAS carries out its mission is through catalysing research aligned with its four Scientific Core Projects. Collectively, DIVERSITAS Core Projects comprise a cycle of discovery, analysis and information sharing that supports the application of socially relevant knowledge:

- bioGENESIS provides an evolutionary framework for biodiversity science, focusing on new strategies for documenting biodiversity, the causes and consequences of diversification, and evolution in relation to biodiversity conservation and human well-being.
- bioDISCOVERY focuses on developing a scientific framework to investigate the current extent of biodiversity, monitor its changes, and predict its future changes.
- ecoSERVICES explores the links between biodiversity and the ecosystem functions and services that support human well-being, and seeks to determine human responses to changes in ecosystem services.
- bioSUSTAINABILITY concerns itself with the science-policy interface, looking for ways to support the conservation and sustainable use of biological resources.

### Cross-cutting Networks

DIVERSITAS also establishes Cross-cutting Networks, on specific topics or ecosystems, which embrace issues addressed in all four Core Projects:

#### Global Mountain Biodiversity Assessment (GMBA)

Steep terrain, extreme climates, and severe land-use pressure make mountain ecosystems among the most endangered in the world. Established in 2002, GMBA synthesises knowledge on ethical, ecological, economic and aesthetic values to tackle issues of societal relevance, including land-use management practices such as fire, grazing and erosion.

#### Global Invasive Species Programme (GISP)

Non-native organisms that cause, or have the potential to cause harm to the environment, economies, or human health, invasive alien species (IAS), are one of the most significant drivers of environmental change worldwide. GISP aims to conserve biodiversity and sustain human livelihoods by minimising the spread and impact of such species.

#### freshwaterBIODIVERSITY

Despite their critical role for basic life support, freshwater ecosystems remain poorly understood. In addition to identifying and monitoring freshwater biodiversity and its role in ecosystem functioning, this network seeks to understand how biological and social processes interact.

## agroBIODIVERSITY

Examining both agricultural and plantation systems, this network promotes research on how contrasting land-use patterns affect biodiversity, ecological economics, and standard economic gains.

## ecoHEALTH

This network studies the relationships between plant and animal biodiversity and (re)emergence of infectious diseases and the consequences for wild biodiversity and human societies.

## Earth System Science Partnership (ESSP)

Recognising the links between biodiversity and other areas of global concern, DIVERSITAS is a founding member of the **Earth System Science Partnership** (ESSP; [www.essp.org](http://www.essp.org)). In addition to DIVERSITAS, this partnership includes three other programmes that focus on global issues such as climate change and human impacts on the planet:

- International Geosphere-Biosphere Programme (IGBP)
- International Human Dimensions Programme on global environmental change (IHDP)
- World Climate Research Programme (WCRP)

Established in 2001, ESSP supports the integrated study of the Earth system: its structure and functioning, change occurring within the System, and the implications of change for global sustainability. ESSP currently oversees four Joint Projects.

**Global Environmental Change and Food Systems** (GECAFS) develops strategies to address food provision concerns while also analysing the environmental and socioeconomic consequences of adaptation and mitigation.

**Global Carbon Project** (GCP) investigates carbon cycles and energy systems to develop policy relevant knowledge that encompasses natural and human dimensions, as well as their interactions.

**Global Water System Project** (GWSP) examines how humans are altering the global water cycle, the associated biogeochemical cycles, and the biological components of the global water system, as well as human response to these changes. This project is closely aligned to freshwaterBIODIVERSITY.

**Global Environmental Change and Human Health project** (GECHH) investigates how environmental change worldwide affects human health and well-being, with the aim of developing policies for adaptation and mitigation. This project is developed in conjunction with ecoHEALTH.

## National Committees and Regional Networks

One of DIVERSITAS' primary objectives is to create a worldwide network in support of biodiversity science that fosters integration across disciplines and establishes links at regional and international levels. Two types of bodies play important roles in the achievement of this objective: National Committees and Regional Networks.

National Committees enlarge DIVERSITAS' scientific and policy networks, thereby helping to establish crucial links between



© istockphoto.com fotoVoyager

national biodiversity programmes and international framework activities. They also make it possible to implement and, where necessary, to adapt the DIVERSITAS Science Plan to local and regional concerns. Because many issues related to biodiversity transcend national boundaries, it is often essential for several countries to collaborate in scientific research and policy development.

The knowledge and experience gained through such integrative approaches is invaluable across the DIVERSITAS network.

## Capacity building

The quest to expand knowledge about biological diversity holds inherent challenges. While most species are located in tropical areas, financial resources and technical capacity are severely lacking outside the developed world. Thus, it is critically important to pursue science while also making technological advances more widely available and building the skills necessary to carry out integrative research. As far as possible, all DIVERSITAS activities will be designed to support direct involvement of scientists from all regions of the world.

## II

### OVERVIEW

The goal of the bioDISCOVERY Core Project of DIVERSITAS is to facilitate the development of science that addresses fundamental questions concerning current and future biodiversity<sup>1</sup> change:

- How and why is biodiversity changing at global, regional and local levels?
- What are future changes in biodiversity likely to be?
- How do we best communicate our understanding of biodiversity change to decision makers?
- What impacts will biodiversity change have on ecosystems and human well-being?
- How can we best conserve and sustainably use biodiversity?

This introduction provides an overview of the current status of our ability to answer these questions and outlines a strategy to improve assessment methods and to strengthen the science of observing, understanding and predicting biodiversity change. The bioDISCOVERY Science Plan focuses on providing responses to the first three questions, but also provides data and insight into the last two questions. This strategy depends on tight collaboration with the other Core Projects and Cross-Cutting Networks of DIVERSITAS, strong partnerships with all of the ESSP<sup>2</sup> programmes and close cooperation with new and existing bodies for assessing biodiversity (e.g., IPBES<sup>3</sup>) and for international decision-making (e.g., CBD<sup>4</sup>, GEO<sup>5</sup>).



**What we know** – The Millennium Ecosystem Assessment<sup>6</sup> (MA) provided strong evidence that the abundance of many species is declining, and that species distributions have been substantially altered due to habitat conversion, pollution, invasive species, overexploitation of natural resources and, more recently, climate change (99). The MA also highlighted the ways in which biodiversity is linked to ecosystem services and ultimately human-well being. Recent historical and current changes in biodiversity have been associated with a degradation of many ecosystem services,

but this has often been accompanied by net gains in human well-being. There is, however, considerable concern based on current and modelled future trends that declining populations, species extinctions, shifts in species and biome distributions and the associated degradation of ecosystem services will lead to strong negative impacts on human well-being in the 21<sup>st</sup> century. There are many current situations that provide a glimpse of a future in which severe biodiversity loss and negative impacts on human well-being go hand-in-hand. For example, many coastal ecosystems are polluted and overfished to

<sup>(1)</sup> We use the term “biodiversity” in a broad sense to mean the abundance and distributions of and interactions between genotypes, species, communities, ecosystems and biomes.

<sup>(2)</sup> The Earth System Science Partnership (ESSP) is a partnership between the international science programmes on global change including the WCRP, IGBP, IHDP and DIVERSITAS as well as four cross-cutting projects on Carbon, water, food, and health.

<sup>(3)</sup> The Intergovernmental Science-Policy Platform on Biodiversity and Ecosystem Services (IPBES) is a scientific and social process to strengthen relations between knowledge holders on biodiversity and ecosystem services and actors involved in decision/policy making processes. The modalities of its functioning, funding and the location of its secretariat are still under discussion as of early 2009.

<sup>(4)</sup> The Convention on Biological Diversity (CBD) is “an international treaty to sustain the rich diversity of life on earth”. It was opened for signature in 1992 in Rio de Janeiro and the secretariat is currently headquartered in Montreal, Canada.

the extent that they have shifted from relatively long, fish dominated food webs of high diversity and high value to relatively short food webs of low value. If current trends continue, the phenomenon will almost certainly become global in scale causing substantial losses of food sources and livelihoods (76).

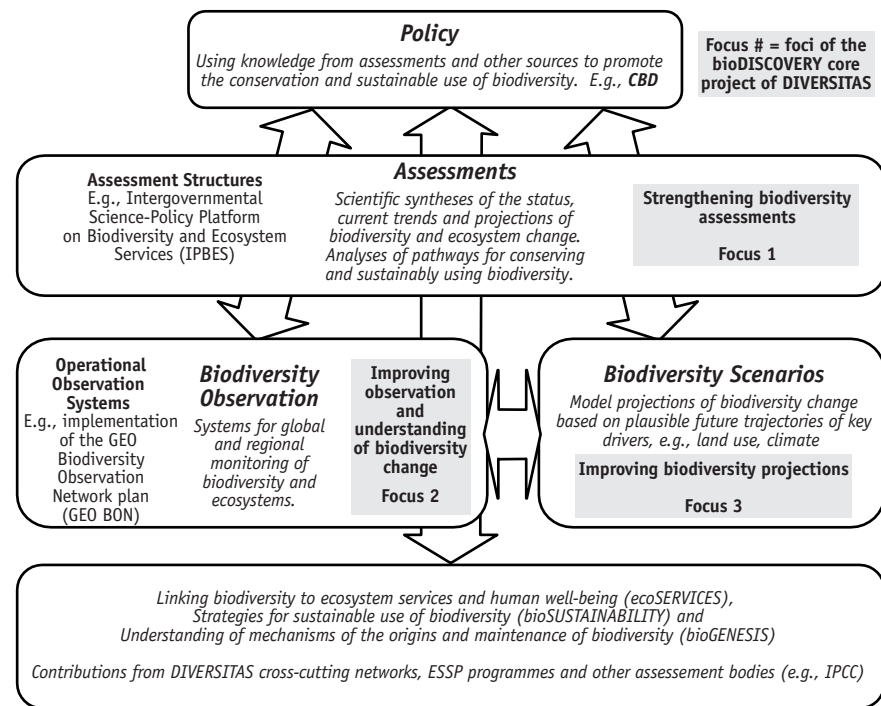
**There are large gaps in our knowledge –**

The MA also clearly highlighted that we do not yet have adequate data or tools to provide sound, comprehensive answers to the fundamental questions outlined above. For example, assessment methods must be improved to make them more comprehensive in their coverage and provide clearer, stronger messages to stakeholders such as decision makers, natural resource managers and the public. There are huge gaps in our knowledge of current biodiversity. Scientists estimate that only about 20% of all species have been discovered or described in any detail. The compilation of even basic information on the abundance and distribution of many species is missing. Tremendous progress has been made in developing future scenarios of biodiversity response to global change, but confidence in these scenarios must be improved through the development of more robust models, rigorous benchmarking and analyses of uncertainty.

**A strategy for strengthening the science**

– The bioDISCOVERY Science Plan can be broken down into three foci that provide the essential elements to address the questions outlined above (Fig.1). The overarching goals of these foci are to stimulate the basic research to understand the mechanisms responsible for biodiversity change and associated

modifications of ecosystem services and to provide input to policy so as to promote the conservation and sustainable use of biodiversity.



Focus # = foci of the bioDISCOVERY core project of DIVERSITAS

<sup>(5)</sup> The Group on Earth Observations' Biodiversity Observation Network (GEO BON) aims to create a global network from local, national and regional biodiversity monitoring efforts "by linking and supporting them within a scientifically robust framework". DIVERSITAS, NASA and EBONE have "accepted the task of leading the planning phase of GEO BON, in collaboration with the GEO Secretariat".

<sup>(6)</sup> The Millennium Ecosystem Assessment (MA) was undertaken by an international consortium of scientists to synthesize the status of the world's ecosystems at the beginning of the 21<sup>st</sup> century. This assessment published in 2005 provides "a state-of-the-art scientific appraisal of the condition and trends in the world's ecosystems and the services they provide, as well as the scientific basis for action to conserve and use them sustainably".

**FIG. 1** Structure of the bioDISCOVERY Science Plan and its relationship to policy making, to structures for monitoring and assessing biodiversity, and to other international research programmes. The three bioDISCOVERY foci are highlighted in grey. Arrows indicate the flow of information. Note that DIVERSITAS does not pilot assessment or monitoring structures but provides the scientific foundations for their structure and operation, participates in their development, offers access to networks, etc.

**FOCUS 1 – Strengthening biodiversity assessments.** Assessments play a critical role in structuring the scientific community, synthesising research and communicating these findings to policy makers, natural resource managers, the scientific community and the public. In this context, the overall goal of Focus 1 is to promote improvements to the assessment of biodiversity across spatial and temporal scales, at different levels of biological organisation, and in terms of the various attributes, processes, and functions of biodiversity. Focus 1 also aims to further stimulate the development of relevant and robust indices of biodiversity change, and to provide a broader scientific basis for better understanding of the consequences of biodiversity change for ecosystem functioning. This work is intended to provide scientific support for a wide range of assessment initiatives, including the envisaged Intergovernmental Science-Policy Platform on Biodiversity and Ecosystem Services (IPBES).

**FOCUS 2 – Improving observation and understanding of biodiversity change.**

There is a substantial amount of biodiversity data available and a large range of monitoring programmes is in operation. One of the difficulties is that these data are not readily available, are heterogeneous in terms of quality, and are incomplete in terms of spatial, temporal and taxonomic coverage. The goal of Focus 2 is to provide the scientific framework to develop systems for monitoring biodiversity change that are capable of detecting trends at various levels of biodiversity, identifying the main drivers

of change, documenting the consequences for ecosystem functions and services, and pinpointing areas of greatest risk. Focus 2 will encourage the development of experiments and the comparisons between observations, experiments and models to gain greater understanding of the mechanisms of biodiversity change. Work within Focus 2 will provide scientific support for the implementation of the GEO Biodiversity Observation Network<sup>5</sup> (129) and regional observation networks (e.g., BIOTA AFRICA, EU LifeWatch network<sup>7</sup>).

**FOCUS 3 – Improving biodiversity projections.** Developing effective policy and adaptive management strategies in the face of global change requires that we anticipate future biodiversity change. Medium to long-range planning will depend, in part, on the use of model-based projections. The goal of Focus 3 is to

increase our confidence in biodiversity projections by encouraging the development of models that better describe the mechanisms of biodiversity response to global change, by facilitating the benchmarking of model predictions using observational and experimental data, and by promoting efforts to quantify sources of uncertainty. This work will cover projections of changes in the abundance and distribution of genotypes, species, species groups and biomes, and will provide input into assessment and monitoring programmes.

**Interactions between foci** – All three foci depend on combinations of observations, experiments and models to achieve their goals. The three foci often rely on the same data or tools, but with slightly different objectives. For example, models play the central role in Focus 3 for projections, but



© J Cracraft

<sup>(7)</sup> The LifeWatch network is a European Union project to construct a European platform for networking biodiversity observatories and for sharing data on-line. This project is still in the development phase. The BIOTA Africa project is described in more detail in the text of the bioDISCOVERY science plan.

these same models will be used for gap filling, understanding mechanisms underlying observed biodiversity changes, etc. in the other two foci. Particular attention will be paid to ensuring complementarity in the development and use of data and tools across the three foci.

**Interactions with other DIVERSITAS projects** – The work within bioDISCOVERY is designed to aid in the assessment of the impacts of biodiversity change on ecosystem services and human well-being that are the focal points of the ecoSERVICES Core Project. It will also provide knowledge that will guide policy and decision-making to implement the sustainable use and management of biodiversity that are the focus of the bioSUSTAINABILITY Core Project. The bioDISCOVERY Core Project also heavily depends on work within the bioGENESIS Core Project related to the detection and description of undiscovered species and to the development of novel methods for increasing the speed and reliability of taxonomic surveys.

This Science Plan is intended for a wide audience including the broad scientific community and stakeholders such as political and economic decision-makers, natural resource and conservation managers. Given the immense magnitude of the task, we hope this document will inspire scientists to participate in this Core Project or other projects under the DIVERSITAS umbrella.

## **FOCUS 1. Strengthening biodiversity assessments**

Assessments play a critical role in synthesising research and communicating research findings to policy makers, natural resource managers, the scientific community and the public. In this context, the overall goal of Focus 1 is to improve the scientific basis for assessment of biodiversity research, and thereby improving how biodiversity science is brought to bear on decision-making. In doing so, Focus 1 also aims to develop more robust indices of biodiversity change, and to provide a broader scientific basis for better understanding the consequences of biodiversity change for ecosystem functioning. This work is intended to draw on, and provide scientific support for, a wide range of assessment initiatives at multiple scales, including the activities of the emerging Intergovernmental Science-Policy Platform on Biodiversity and Ecosystem Services (IPBES).

Focus 1 comprises four complementary research tasks that support more comprehensive and scientifically credible biodiversity assessment at multiple scales:

- Integrating heterogeneous data sources into biodiversity assessment;
- Improving the credibility with which biodiversity change is interpreted, including through the use of indicators;
- Developing scientifically rigorous novel and rapid biodiversity assessment approaches, and;
- Providing more robust evaluation of uncertainty in biodiversity assessments.



© CNRS Photothèque / J. Thompson

Focus 1 will be implemented and supported by bioDISCOVERY through stimulating, guiding, and connecting multiple, small-scale assessments of biodiversity from which insightful synthesis can be drawn. This will include a balance of support provided for adopting and testing new approaches to biodiversity assessment, and encouragement for creativity in local assessment initiatives, resulting in the development of novel approaches to biodiversity assessment from which lessons learned and best practice can be derived and shared. bioDISCOVERY will also play a role in coordinating activities to develop and agree on new approaches for assessment and the presentation of uncertainty. This will include new approaches for determining priorities for assessment, and the development of representative and robust indicators and indices of biodiversity change.

## RESEARCH TASKS

### RESEARCH TASK 1.1 Heterogeneous data sources are integrated into biodiversity assessments

The current focus of global biodiversity assessment is on species level taxa, and within that there is a bias towards the better-known groups of vertebrates and terrestrial systems (14, 26, 95). The only taxon for which data have enabled a complete assessment of trends in the conservation status through time is birds (27). Almost nothing is known about the status of microorganisms or marine biodiversity, the global status of genetic diversity beyond a few domesticated species, or ecosystem change at global scales (31, 70, 95, 141). Despite over 40 years of satellite observation, a globally consistent land-cover change data series remains elusive. There is therefore a considerable need for improving the scope of biodiversity assessment, to integrate a wider set of data sources, and to better encompass genetic, population and ecosystem scale biodiversity. As well as a wider range of taxa, the further development of modelling approaches and scientific understanding of ecosystem functioning will support the inclusion of biodiversity interactions into assessment.

In addition to encouraging the collection and collation of further primary biodiversity data, data sets on biodiversity and environmental variables need to be better linked to enable more effective and relevant assessment. There is now considerable opportunity to connect biodiversity data through the growing

number of global data clearinghouses, including the emerging GEO Biodiversity Observation Network (GEO BON) and Global Biodiversity Information Facility (GBIF) (see Focus 2), but in all cases more robust approaches are needed to ensure data are appropriately and meaningfully integrated and assessed.

### RESEARCH TASK 1.2 Biodiversity change is credibly interpreted, including through the use of indicators

Biodiversity assessment would be improved significantly if a broader set of more representative indicators was available to track biodiversity change. Current global indicators of biodiversity are insufficient to provide representative measures of change – both due to the paucity of data, but also due to the methodological constraints in the use of available data. A high priority is to build on ongoing initiatives that are taking place within the context of the Convention on Biological Diversity and the European Environment Agency (32, 142) in order to develop new global and multiscale biodiversity indicators that would be useful for future international biodiversity targets, beyond 2010.

Indices are needed that are sufficiently robust, representative, and sensitive to monitor biodiversity change at global and sub-global scales, but also fulfil the requirement to communicate complex biodiversity data in an easily understandable manner to decision-makers and the public (15, 25, 103). Indicators need to be developed that monitor not just

the conservation status of various taxa, but are also relevant to ecosystem functioning and services, and can easily be incorporated into biodiversity models and scenarios (see Focus 3). Further research that combines experimentation, observation, modelling, and meta-analysis of the causal links between environmental changes and changes in biodiversity, including research into the sensitivity of different taxa to change, will also lead to improvements in the capacity to develop indicators for use in early warning and integrated environmental assessment.

Despite being an extensive area of research, there are remarkably few robust generalisations about the consequences of biodiversity change for ecosystem functioning. While the need for more fundamental research remains, priority should now be given to interpreting and assessing biodiversity to be able to provide guidance to decision-makers on possible “dangerous” biodiversity changes, in an analogous manner to that assessed in climate change science (127). Considering what might constitute “dangerous” biodiversity change is a key research question that would require both consideration of the consequences of biodiversity change, and the development of robust metrics to track change.

It is likely that most biodiversity remains to be discovered, and much biodiversity is localised and rare. Determining the contributions of rare, and as yet undiscovered, biodiversity to ecosystem functioning and the resilience of ecosystems to change is also a key frontier in biodiversity research and conservation.

More comprehensive assessment of rare and local biodiversity is likely to lead to new insights into the characteristics of diverse systems, and the role of diversity in ecosystem functioning, further supporting the assessment of “dangerous” biodiversity change.

### **RESEARCH TASK 1.3 Scientifically rigorous, novel and rapid biodiversity assessment approaches are developed**

Biodiversity assessment would benefit considerably from the development, testing and validation of novel approaches. For example, there is considerable potential for developing scalable assessment approaches that would enable greater insight to be drawn from the development of networks of assessments at multiple spatial scales. This might include the development of scalable core variables and indicators, the development of common research questions, and the use of a common conceptual framework for linked networks of biodiversity assessment. There have also been recent advances in developing rapid assessment methodologies to better inform decisions in time-bound situations of high uncertainty, and in situations of resource or capacity constraints (11, 55). It is important that such approaches maintain scientific credibility if they are to be effective and useful.

To advance understanding of biodiversity and to support assessment prioritisation, a key research area is to determine how much more needs to be discovered and

understood in order to better manage biodiversity. Modelling studies may contribute to both more efficient use of existing information and to identifying key gaps in knowledge. In collaboration with the assessment user community, further attention needs to be given to identifying the priorities for assessment – both in the context of global biodiversity change, and in the local values of biodiversity to people through ecosystem services.

### **RESEARCH TASK 1.4 Robust evaluation of uncertainty is provided in biodiversity assessments**

One of the key elements of biodiversity assessment is to consider and communicate important uncertainties. There is a variety of methods by which uncertainties can be measured, allocated and communicated and

these need to be applied to assessments of biodiversity status and change, as well as to biodiversity models.

New work is needed to enable the available and emerging biodiversity models to better inform biodiversity assessment. This will include assessments of uncertainties in model structure as well as data inputs and future projections and scenarios. Advancing individual techniques such as ecological niche modelling (12, 53, 67) and combining these with new mapping techniques such as gene mapping and isotope mapping (34, 35) will enable new approaches to determine the distribution and status of a wider range of taxa, and especially rare species (106). Reducing uncertainty and providing more robust measures of uncertainty will contribute considerably to strengthening the credibility and utility of future assessments of biodiversity.



© S Colin, Roger Williams University & J Costello, Providence College

## FOCUS 2. Improving observation and understanding of biodiversity change

The goal of Focus 2 is to develop the scientific framework to enable systems for monitoring biodiversity change that are capable of:

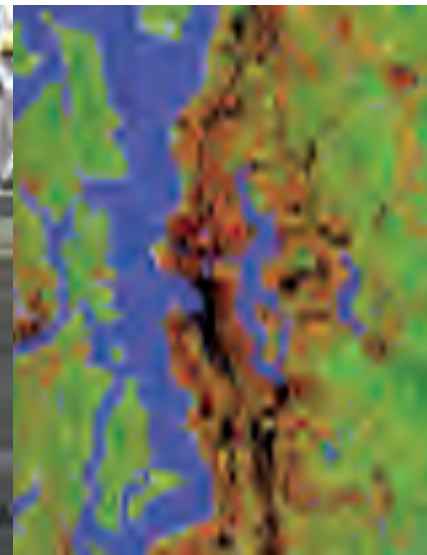
- Measuring change of biodiversity at various scales and levels (genes, taxa, functional groups and communities, as well as structures and functions of ecosystems),
- Identifying the environmental and socioeconomic drivers of change and the consequences for ecosystem functions and services,
- Analysing the complex biotic mechanisms governing the dynamics, direction and intensity of change of biodiversity, and
- Pinpointing areas where the constellations of drivers, pressures, vulnerability, resilience, create a high risk for biodiversity loss.

One of the overarching goals of the three research tasks of Focus 2 is to improve our ability to provide robust scientific information on the change of global biodiversity by integrating existing activities and approaches in terrestrial, freshwater, and marine systems.

Various regional and global biodiversity observation schemes exist, but they are very heterogeneous in terms of what and how biodiversity is monitored and are still divided into separate terrestrial (20, 49, 66), freshwater (45, 47, 143) and marine (41, 62) systems (Box 2.1). Focus 2 aims



© CNRS Photothèque / Y Handrich



© J Hepinstall, Urban Ecology Research Laboratory, Department of Urban Design and Planning, University of Washington

to bring scientists involved in these various schemes together to design strategies that integrate various monitoring activities and improve them using a combination of top-down and bottom-up approaches. For example, the top-down approach may lead to new specifications for capturing, integrating, and analysing relevant satellite observations as well as calls for new remote sensing data sets, while the possible bottom-up approach could lead to the organisation and adoption of methods for reliable 'citizen science' on a global level. Such activities will necessarily be closely linked with the activities of the global biodiversity observation network GEO BON (Box 2.2). bioDISCOVERY will play a key role in stimulating the research that feeds into the designs and methods of such global monitoring systems so as to make them operational on all levels; e.g., how to organise and analyse the vast amounts of biodiversity data that have been and will be collected. Connections to other disciplines

dealing with similar data problems, e.g. health, agriculture, etc. will be made.

A second overarching goal of Focus 2 is to synthesize and interpret monitoring results in an ecosystem context. In particular, observations systems must provide more than just information on the status of biodiversity; they must place this information in an ecosystem context using extrapolations, models and expert opinions to evaluate ecosystem resilience and vulnerability and their relationships to human well-being. For example, an observation system might not just provide data showing the declining status of a fisheries stock, but could also provide data indicating possible causes (e.g., eutrophication, high fishing pressure) and documenting loss of ecosystem services. This approach will strengthen early-warning and high-risk assessments and help to ensure that data from long-term monitoring are synthesised and interpreted in ways that facilitate their use (2, 70, 74).

## BOX 2.1 Examples of regional and continental biodiversity monitoring systems

For illustrative purposes, we present three different systems that are monitoring biodiversity at various levels of biological organisation.

### BIOTA AFRICA: BIOdiversity Monitoring Transect Analysis in Africa

Within some of the major regions and biomes of the African continent, this project established a network of structurally comparable, standardised *in-situ* monitoring sites (Figure B.2.1) to monitor a wide variety of taxa, e.g., algae, fungi, lichens, plants, spiders, insects, and small mammals, and to combine the biodiversity monitoring with climate and soil monitoring, remote sensing, field experiments, modelling exercises, biogeographical and socio-economic studies. BIOTA AFRICA also performs capacity building, e.g., the training of local para-ecologists (18, 20, 78, 79). Data storage has been centralised, so that data are interactively available to all research groups involved in the project and made available over the internet via BioCASE (6) and GBIF (9). This international research network ultimately aims to promote sustainable use of biodiversity and conservation within Africa.

### Continuous Plankton Recorder Survey

The Continuous Plankton Recorder Survey (41) based at Sir Alister Hardy Foundation for Ocean Science (SAHFOS) is a marine monitoring programme that has been collecting data mostly from the North Atlantic and the North Sea on the ecology and biogeography of phytoplankton and zooplankton since 1931. SAHFOS is unique in having comparable data on the geographical distribution, seasonal cycles and year-to-year changes in abundance of plankton over a large spatial area. Data are available in paper form back to 1931 and from January 1946 onwards in a computerised relational database, containing results from 181,262 sampled routes with more than two million taxonomic abundance entries. This unique marine biological dataset provides a wide range of environmental and climatic indicators and is used by marine scientists and policy makers to address marine environmental management issues such as harmful algal blooms, pollution, climate change and fisheries. It publishes regular reports on the status and trends of oceanic plankton as well as scientific publications on the effects of climate change, eutrophication, fisheries, non-indigenous species and weather phenomenon such as the North Atlantic Oscillation on oceanic plankton. Research is being expanded to include other oceanic regions as well.

### DIWPA: DIVERSITAS in Western Pacific and Asia

Within the region of Western Pacific and Asia, DIWPA (49) maintains an international network for promoting cooperative studies and information exchange on biodiversity. Its main activities are: (1) promotion of international research projects, (2) facilitation of international citizen programmes, and (3) promotion of governmental and non-governmental activities for conservation and utilisation of biodiversity. Through its inventory system, DIWPA aims to improve the quality of specimens, by including DNA samples and secondary chemical compounds in addition to traditional specimens of morphology. The main inventory specimens are deposited at the core centre and duplicate specimens are stored in regional centres. Specimens and information are open to scientific research and use by industry and the public. With increasing threats to biodiversity due to global change, DIWPA is now committed to work with the major international global change programmes to understand and predict ecosystem change and biodiversity loss in the Western Pacific and Asia (including Polynesia). DIWPA also undertakes the rapid assessment of the current status and predictions of the ecosystem changes and biodiversity loss under the context of MAIRS (Monsoon Asia Integrated Regional Studies) and the ESSP (Earth System Science Partnership among IGBP, IHDP, WCRP and DIVERSITAS).



**FIG. B.2.1** BIOTA AFRICA research areas: the project cooperates with about 80 universities and research institutes that form four regional networks. Each network maintains a number of monitoring sites, called biodiversity observatories, along various landscape transects. A nested plot design is maintained within each biodiversity observatory.



## RESEARCH TASKS

bioDISCOVERY working groups will develop research tasks through various activities such as workshops and networking. bioDISCOVERY will also play an advisory role in various global monitoring institutions and programmes that are beginning to implement a vision of a global biodiversity observation system (Box 2.2 on GEO BON). Here, we focus on the science necessary to make such a system as efficient and informative as possible.

### **RESEARCH TASK 2.1 Biodiversity observation incorporates a broad set of measures of environmental and socio-economic drivers, biodiversity change and ecosystem services**

Due to the complex role of biodiversity in the earth system, the measurement of change of biodiversity should integrate the whole cause and effect cascade starting with the causes of change, focusing on the measurement of change itself and ending up with the consequences of change for ecosystem services.

#### **Task 2.1.1 - Environmental and socioeconomic drivers of biodiversity change are integrated into biodiversity observations**

Long-term monitoring has the potential to expand its data collection to include proximate and ultimate drivers of biodiversity change, such as biogeochemical cycles, climate change, land-use change and socio-economic change (42, 52). In conjunction with two other Core Projects (ecoSERVICES and bioSUSTAINABILITY),

bioDISCOVERY aims to bring together monitoring, ecosystem and sustainability scientists to link observation and monitoring to process understanding, ecosystem functioning and services, resource management and model-based projections (Focus 3). For example, a key question will be how to set up monitoring schemes that can disentangle the impacts of climate and land use change on biodiversity.

#### **Task 2.1.2 - Biodiversity observation incorporates a broad set of measures of biodiversity**

Current observation systems often provide information on a relatively limited range of levels of biodiversity. *In-situ* monitoring often focuses on taxa, morphotypes, or community types while remote sensing often focuses on functional groups or community types (often using different classifications than *in-situ* studies). One of the goals of this task is to encourage the monitoring of a broader range of levels of biodiversity in all observation systems including genetic diversity and diversity of functional traits (*i.e.*, traits of organisms that are related to their role in ecosystem function or their response to environmental change). Monitoring of genetic diversity has greatly increased over the last decade due to the development of rapid genetic and meta-genomic analysis methods. Work in close collaboration with bioGENESIS will encourage the broader adoption of these techniques in observation systems and will contribute to the development of *in-situ* barcoding instruments. Monitoring of functional traits has also greatly increased over the last decade due to standardization of methods and increased interest in linking

biodiversity to ecosystem functions and services (37, 48, 88). Close collaboration between bioDISCOVERY, ecoSERVICES, the IGBP and other partners has already led to the development of a global database of plant traits for use in earth-system models (TRY network) and a generalised framework for integrating trait data for all types of organisms and linking them to ecosystem services (TraitNET, as part of the ecoSERVICES Core Project). This task will encourage the broader adoption of functional trait measurements in observation systems, and support the further development of global databases and the use of trait data in biodiversity models (Focus 3).

#### **Task 2.1.3 - Measurement of ecosystem services are linked to biodiversity observation**

Long-term monitoring has the potential to expand its data collection so that key ecosystem services are included (42, 52, 103, 108). The rationale is two-fold: to strengthen the causal link between biodiversity and ecosystem services so as to better understand the entire system, and to bolster the socio-economic arguments that biodiversity is linked to human well-being so as to inform management and policies (75, 93, 101, 132). For example, it has been shown that mapping ecosystem services can improve regional conservation planning (33, 100, 114, 123), thus protecting both biodiversity and ecosystem services. Therefore, bioDISCOVERY will foster work that combines monitoring, mapping and modelling of biodiversity and ecosystem services.

## RESEARCH TASK 2.2 Interoperability between biogeographical, remote sensing, ecosystem process and population dynamics data is enhanced

Monitoring has so far embraced three conceptually different approaches: (1) monitoring taxa and their populations, (2) monitoring structures and patterns of biodiversity with remote sensing techniques and (3) *in-situ* monitoring of ecosystem processes. Their strengths and weaknesses are discussed in [Box 2.3](#). While each approach can be improved and expanded, the central scientific challenge is to integrate them by using them to reciprocally verify their results, thus strengthening the overall global monitoring effort ([42, 108](#)). The goal of this task is to foster such exchanges, particularly in the context of the development of GEO BON.

## RESEARCH TASK 2.3 Experimental, modelling and observation data are integrated to improve understanding of the mechanisms of biodiversity change

To improve our understanding of ecosystem processes and enhance our ability to forecast biodiversity change, long-term monitoring, field experiments and ecological modelling need to be closely integrated ([42, 108](#)). One important challenge is to develop field experiments and biodiversity models ([Focus 3](#)) that will help identify those biodiversity components that are sensitive indicators or early warning systems for sudden and dramatic changes in biodiversity and ecosystem services ([30, 103, 108, 135, 136](#)). For example, early warning models for detection of population decline and extinction risk



### Jasper Ridge Global Change Experiment

The responses of biodiversity and ecosystem function to factorial manipulations of atmospheric CO<sub>2</sub> concentrations, N deposition, temperature and precipitation are being studied at the Jasper Ridge Global Change Experiment in California. This study is helping to understand the complex interactions between simultaneous global change factors ([150](#)).  
©N Chiariello.

have been developed ([51, 63, 81, 85, 98, 105, 113, 133](#)), as have models of eutrophication ([38](#)), watershed deterioration ([65, 80, 130](#)), deforestation ([57, 96](#)), environmental or toxicological stress ([21, 39, 59, 83](#)), disease outbreaks ([58](#)), and species invasions ([139, 147](#)). The ability to identify negative trends and risks using models, experiments and observational data would provide substantial added value to monitoring systems.

One of the biggest gaps in our understanding of the effects of global change on biodiversity concerns the interactive influences of a broad range of natural and anthropogenic drivers. Until recently, there have been relatively few multi-factor, global change experiments that could help to disentangle these complex interactions ([but see 150](#)), but the number is rapidly increasing in terrestrial ecosystems. bioDISCOVERY will work closely with the TERACC network, the GLP and other partners to support the establishment and networking of such multifactor experiments, including in aquatic ecosystems. Such experiments will play a key role in helping to detect and disentangle the drivers of observed changes in monitoring systems.

An additional challenge is to close monitoring gaps with ecological modelling since observation systems cannot monitor everything. For example, one of the key weaknesses of remote sensing is its uncertain link to lower levels of biodiversity ([Box 2.3](#)). For example, a West African forest may still be structurally intact to the eyes of a remote sensor because it has an undisturbed canopy of healthy trees, but hunting may have completely decimated the mammalian fauna ([24, 54, 145](#)). Furthermore, forests with the most intense hunting pressures may be in zones that are very difficult to access (e.g., civil-war zones) making ground-truthing a practical impossibility. Therefore, to get a better picture of biodiversity change in such situations, we need ecological models that may use parameters such as human population, food consumption or degree of armed conflict as proxies to estimate biodiversity loss. Likewise, modelling may be needed to estimate biodiversity trends for mega-diverse taxa such as invertebrates, fungi and bacteria, where monitoring simply cannot do the job. On the other hand, models of the relationships between drivers of change, biodiversity and ecosystem services need field experiments to test the directions and strengths of causal relationships.

Biodiversity monitoring must become more inventive and encompassing, and bioDISCOVERY will foster progress by bringing together experimental, monitoring and modelling scientists. One of the crucial goals will be to integrate ecological concepts such as food webs, species interactions and community assemblage as well as conservation concepts such as metapopulation theory, minimum viable population, area selection algorithms, fragmentation and connectivity, into a spatially explicit modelling framework that draws on information gathered from all monitoring approaches (17, 63, 100, 113, 149). This effort will be coordinated with the new HEW (Humans, Ecosystem Services and Well-being) programme of ICSU, UNESCO and UNU where place-based, integrated studies will be promoted. Concepts such as ecosystem services and drivers of change need to be linked into the modelling framework to finally create an operational biodiversity model that can render regional and global biodiversity projections given various socio-economic inputs (Focus 3), thus delivering a key tool for conservation managers and policy makers (30, 108, 125).

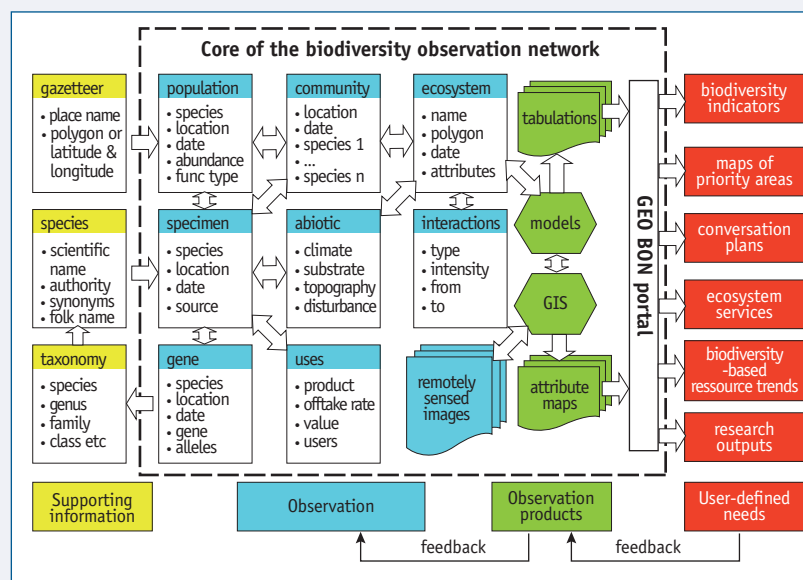
### BOX 2.2 GEO BON: A vision of a global biodiversity monitoring system

With the adoption of the international target of reducing the rate of biodiversity loss by 2010 (7, 32) and the initiation of GEOSS (10, 60), the goal of creating an internationally coordinated, globally integrated biodiversity monitoring system is supported by directly policy-relevant processes (8, 69, 92, 111, 117, 128).

DIVERSITAS and NASA are facilitating the early planning stages for the GEO Biodiversity Observation Network (GEO BON, 146). bioDISCOVERY Scientific Committee members actively support GEO BON in an advisory role. The overall vision for GEO BON includes the following processes (129):

- Technical, logistical, and institutional implementation through the long-term establishment of a global biodiversity monitoring facility and data clearinghouse, similar to the GBIF (9), which would ensure standardised data protocols, flows, interoperability and analyses (see Figure B.2.2)
- Continuous scientific research and advice by a scientific advisory committee for GEO BON that, with a mandate from both data providers and users, regularly reviews, improves, validates and endorses the actual implementation of the monitoring system, including an accepted set of biodiversity indices.

In this context, bioDISCOVERY supports that such a network combines global programmes that follow a top-down, centrally coordinated approach and regional programmes that follow a bottom-up approach (111). The bottom-up development of local and regional capacity-building enables users to monitor those aspects of biodiversity of relevance to them (19, 46, 77, 86, 121, 122, 131, 148).



**FIG. B.2.2** A schematic representation of the core set of data types, observation products and end uses of an integrated biodiversity observation system such as the envisioned GEO Biodiversity Observation Network (129). Most of the elements already exist, but are incomplete or dispersed among a wide range of partners.

### BOX 2.3 Three different monitoring approaches

#### Monitoring taxa and their populations (taxon-specific monitoring)

This approach monitors the number of individuals, populations, or species over time. Its weakness is the usually insufficient spatial and temporal resolution and the often heterogeneous quality of these data. It also provides little information on ecosystem context and drivers of change, unless such monitoring is specifically included. Moreover, most of the taxon-specific monitoring schemes are of local or regional scale, and only some of continental and a few of global scale (91, 103, 111). Its strength is the often large number of independent samples and their sometimes high temporal depth, as well as the high interest from important international stakeholders (e.g. BirdLife International, CBD, CI, IUCN, WWF, etc.) and the public in taxon-specific information, especially regarding the so-called charismatic megafauna and flagship species. Therefore, direct monitoring of these kinds of taxa will remain a high priority because they are:

- attractive to the public and thus generate more financial and political support,
- easy to monitor because they are well-known, often easy to spot and identify and therefore generate most voluntary monitoring effort, e.g., through bird watching,
- represented by relatively few species, thus require less effort than mega-diverse groups such as insects or microbes,
- amenable to monitoring even for rare species, which represent the tip of the iceberg of the extinction crisis, and
- often indicators of pristine ecosystems because of their key role in regulating food webs as top predators and/or keystone species (36).

However, mega-fauna represent a very small proportion of the world's biodiversity (102). This taxonomic imbalance should be addressed through gap analyses, and, whenever possible, monitoring should gradually expand to consider the vast diversity of invertebrate, fungal and microbial taxa that play a role in determining ecosystem services, human health and economic welfare (50).

#### Monitoring structures and patterns of biodiversity with remote sensing techniques over large areas

This approach uses remote sensing techniques to monitor structural properties of biodiversity or even proxy data at the level of ecosystems and/or vegetation structures. Its greatest weakness is clearly its uncertain link to lower levels of biodiversity, *i.e.* the level of genes, populations and taxa (89, 90, 112). Furthermore, remote sensing of freshwater and marine habitats is much less developed than that of terrestrial habitats. Its strengths are its almost non-existent human observer bias, its spatial resolution (down to metres) and coverage (often continuous and possibly global) and temporal resolution (conceivably down to days or even less) and length (sometimes decades). Figure B.2.3 illustrates the increasing power that new remote sensing techniques have for detecting subtle biodiversity changes in complex ecosystems. Increases in computational capacity and increasing user-friendliness of geographical information systems have facilitated their global use in

making regional and global assessments of, for example, land cover and seasonal vegetation (1, 56, 57, 68, 97, 120), but successful intercomparisons over time or across systems require consistent measurement techniques and classification schemes (61, 97).



**FIG. B.2.3** New “spectranomic” approaches based on advanced airborne sensor technologies, such as hybrid hyperspectral-laser systems, demonstrate that mapping of canopy species richness and abundance is possible, even in complex tropical forest ecosystems. These images were collected by the Carnegie Airborne Observatory’s Spectranomics Team (<http://cao.stanford.edu>), showing that the 3-D chemical composition of rain forest

canopies (bottom layer) reveal the presence of certain invasive species (yellow in middle layer) as well as canopy diversity hotspots (red in top layer). Reproduced with permission from G. Asner (<http://asnerlab.stanford.edu/index.shtml>).

#### *In-situ* monitoring within an ecosystem context (site-specific monitoring)

This approach observes one or several parameters of biodiversity within an ecosystem context, usually within one or a few pre-defined sites, ranging from a small habitat patch to the size of a country. Its weakness is the often low degree of connectivity and inter-operability because sites are usually local and isolated and because a very wide variety of methods are being applied. Furthermore, high resource investment is usually required. One of the strengths of this approach is high data quality and density. Another strength is that biodiversity changes can be monitored together with ecosystem processes and services and even proximate and ultimate drivers of change. Thus *in-situ* monitoring can help answer specific research questions that are linked to conservation goals or drivers of change. Experiments used at monitoring sites can directly feed into scientific understanding of system dynamics, which in turn can be used to model biodiversity (Focus 3). Such experiments can sometimes also be used as demonstrations to illustrate to land users methods of sustainable use of biodiversity, restoration of degraded systems, etc. *In-situ* monitoring has the potential to become a powerful tool of biodiversity science as well as to expand onto the global scale, as several regional or continental monitoring systems have now demonstrated its applicability to larger spatial scales and long time periods. An example of *in-situ* monitoring, experiments and demonstrations being combined into extensive networks of sites for assessing ecosystem processes is provided by the International Long-Term Ecological Research Network (ILTER) (72, 107, 144).

A successful Global Biodiversity Observation Network will need to incorporate all three of the monitoring approaches discussed above.

### FOCUS 3. Improving biodiversity projections

The goal of Focus 3 is to enhance our understanding of future biodiversity change in response to multiple natural and anthropogenic drivers based on integrated analyses of observations, experiments and models. This understanding will be used to develop improved, quantitative projections of future changes in the abundance and distributions of genotypes, species and functional groups of plants, animals and micro-organisms as well as community and biome structure and distribution. The development of well-accepted and compelling model-based projections of the future of biodiversity will rely on:

- Developing improved mathematical models of biodiversity response to a full range of key drivers,
- Comparing observations, experiments and models to parameterise and test models (see Focus 2),
- Using well-tested models to generate quantitative scenarios of future biodiversity change that include assessment of uncertainties, and
- Coupling these scenarios to estimates of the impacts of biodiversity change on ecosystem services and economic impacts (Fig. 2).

Our efforts will focus on supporting research on the weak links in this chain of analysis, including data/model comparisons, analysis of uncertainty, and ties to ecosystem services. To address these and other issues, Focus 3 of bioDISCOVERY will promote research tasks that: 1) develop

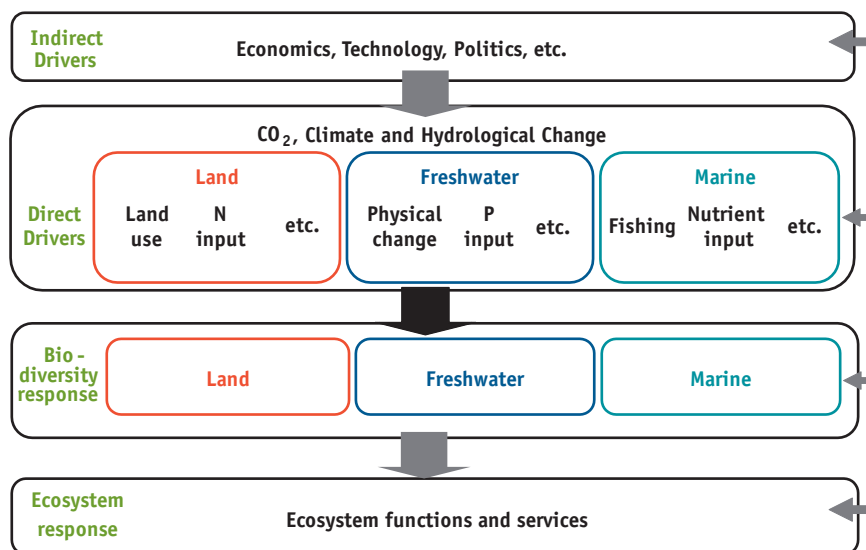


#### Monitoring fertilizer effects on wild orchids.

Counting wild orchids in a study of the long-term effects of N and P fertilizer addition on their populations in a pasture of a regional park in central France. ©P Leadley.

improved quantitative projections of future biodiversity change that explicitly treat multiple sources of uncertainty and 2) link projections of biodiversity change to impacts on ecosystem services and to decision making.

The development and testing of models with observations and experiments in order to provide improved confidence in projections of future biodiversity is described in Focus 2 and will require strong links will focus 1 of bioDISCOVERY and with



**FIG. 2** Major drivers of biodiversity change and their impact on ecosystem functions and services in land, freshwater and marine systems. Research in Focus 3 of bioDISCOVERY will concentrate on studying and predicting the impact of the main direct drivers of biodiversity (black arrow). Studies of indirect drivers and of the impacts of biodiversity change on ecosystem services are dealt with in the bioSUSTAINABILITY and ecoSERVICES Core Projects of DIVERSITAS and in other ESSP programmes (grey arrows).

the bioGENESIS Core Project. The second task will require strong links with the ecoSERVICES and bioSUSTAINABILITY Core Projects.

combination with a large array of earth system models. This task outlines steps for following a similar pathway for biodiversity scenarios, while acknowledging that this is



© C Zöckler

## RESEARCH TASKS

### **RESEARCH TASK 3.1 Quantitative projections of future biodiversity change are improved and explicitly treat multiple sources of uncertainty**

The climate change community has been successful in generating credible climate scenarios because they have developed models that include most of the key processes influencing climate, tested their models against observed climate variation in the past and assessed uncertainty in future climate scenarios by studying a wide range of socio-economic scenarios in

an extremely challenging task because of the large number of drivers of biodiversity change and the large variety of biodiversity response models.

This task will concentrate on improving model-based scenarios of the *response* of biodiversity to natural and anthropogenic drivers (Fig. 2). Thus, the evaluation of uncertainty will require close collaboration with researchers from other Core Projects of DIVERSITAS and a number of other ESSP programmes who are working on models of the indirect and direct *drivers* of biodiversity change (Fig. 2).

Work on this task will build on several existing approaches of generating biodiversity scenarios including integrated, global scale modelling of the type done for the Millennium Ecosystem Assessment (29) or with the GLOBIO model (3), and a variety of other approaches including dynamic global vegetation models (DGVMs) (44, 84), empirical models of the impacts of habitat modification in freshwater systems (104), regional fisheries models (109), niche-based modelling (137, 138), and a variety of landscape scale approaches (40) (Box 3.1). Several tasks will be an essential part of building the next generation of biodiversity models:

#### **Task 3.1.1 Stronger links are established with researchers developing scenarios of factors driving biodiversity change**

Future scenarios of indirect and direct drivers of biodiversity change have been developed within the Millennium Assessment and the IPCC working groups, among others. The dialog with biodiversity modellers must be reinforced to ensure that the most recent scenarios of direct and indirect drivers are used in modelling biodiversity response, that guidance on the proper use of drivers is provided and that the outputs of models of drivers match the needs of biodiversity models. One example of the increased collaboration between DIVERSITAS and its partners are research projects that are currently being developed to examine the impact of extreme climatic events on biodiversity (Box 3.2).

### **Task 3.1.2 Emerging drivers of biodiversity such as genetically modified organisms (GMOs) and biofuels are included in projections of biodiversity change**

Habitat modification, nutrient loading, invasive species, exploitation and, more recently, climate and atmospheric change are generally considered to be the major direct drivers of biodiversity change (29). A number of additional factors – such as GMOs and biofuels – are emerging as potentially potent drivers of future biodiversity change. The potential positive and negative effects of these emergent drivers must be rapidly assessed and then included in biodiversity scenarios. With these goals in mind, DIVERSITAS has recently joined with its ESSP partners and SCOPE to undertake assessments of the potential impact of biofuels on biodiversity and to develop long-term research strategies.

### **Task 3.1.3 Treatment of uncertainty in projections is improved**

Uncertainty in biodiversity scenarios has rarely been treated in a thorough manner, in part because of the difficulty in doing so. Occasionally, a wide range of scenarios of indirect drivers (e.g., greenhouse gas emissions scenarios) and direct drivers (e.g., model projections of climate change) have been explored (12, 13, 29, 110, 138). However, very few studies have focused on the sensitivity of biodiversity scenarios to the choice of biodiversity response model. Model comparison has been an essential element in improving understanding and building confidence in many areas of environmental modelling and therefore must

be undertaken by the biodiversity community. A few research programmes are beginning to explore uncertainty in biodiversity scenarios using comparisons of a broad range ensemble of biodiversity response models, and bioDISCOVERY will encourage the exchange of ideas in this emerging area of research.

### **Task 3.1.4 Novel approaches to modelling biodiversity response are developed**

No biodiversity response model currently simulates the abundance and distribution of a wide range of species or species groups to global change based on mechanisms that describe functional interactions with the environment, species interactions, mortality, migration and adaptation. All of these elements are potentially necessary to simulate the effects of global change on species loss and the impacts of changes in abundance and distribution on ecosystem services. While it is unreasonable to expect that any single model will include all of these elements in the near future, many existing models are being improved and several novel types of models are being developed (4, 82). bioDISCOVERY is currently collaborating with the GLP project to develop a new generation of DGVMs (see Box 3.1) and forest gap-dynamic models that include a broader range of species or species groups and/or improved representations of mortality and migration (“Biome Boundary Shift” initiative). This effort is strongly tied to the IGBP/DIVERSITAS Plant Functional Classification initiative, which will provide some of the key plant trait data (TRY network) necessary for the parameterisation



© CNRS Photothèque/C Delhaye

of these models. DIVERSITAS will also sponsor “brainstorming” workshops on novel approaches to modelling biodiversity response. In addition, coordinated efforts in Focus 3 and in the bioGENESIS Core Project aim to strengthen ties between groups working on biodiversity change at the genotype, species and functional group levels. This will include a coordinated effort with bioGENESIS to develop models that can account for rapid evolutionary responses to environmental change.

### **Task 3.1.5 Generalised, modular modelling frameworks are tested**

A modular framework for ecosystem models that includes information about the abundance and distribution of plants or animals could substantially facilitate the development and comparison of biodiversity scenarios. As an example of such an initiative, the French ANR funded “3Worlds” project is underway with the objective of building a highly flexible, modular, spatially explicit ecosystem model with a strong ecosystem functioning and biodiversity emphasis. The fate of similar projects in the past suggests that such initiatives are high risk, but the potential gain is great, so DIVERSITAS will join with the GLP in supporting such initiatives.

### **RESEARCH TASK 3.2 Projections of biodiversity change will be linked to ecosystem services and to decision making**

Policy makers and biodiversity managers are confronted with the task of assessing a wide range of complex tradeoffs when making decisions that may affect biodiversity: Will conservation measures for one species have positive or negative effects on others? Will the intensification of agriculture have a net negative impact on biodiversity, or will it leave more space for “natural” habitats as marginal lands are abandoned (16, 28, 64, 126)? Will increasing the use of biofuels negatively affect biodiversity at the global scale by competing for land, or will it brighten the future for biodiversity by limiting climate change (5, 36, 71, 87, 115, 116, 118, 124, 140)? Our current tools for assessing these types of tradeoffs are rudimentary. But rapid improvement in biodiversity response models will allow them to become an important aide to decision making.

#### **Task 3.2.1 Biodiversity projections are broadened to include more emphasis on ecosystem services**

Much of the recent emphasis of biodiversity scenarios has been on predicting the effects of global change on species presence or absence, species richness or the risk of species extinctions. These scenarios can be of considerable use, but explicitly linking biodiversity change to ecosystem services and human well-being will be of considerable help in guiding the development of policy and biodiversity management strategies. There is substantial

work being done on modelling changes in the abundance and the distribution of species that can often be readily tied to ecosystem services. In collaboration with the ecoSERVICES Core Project, our objective is to increase the visibility of such examples via high-profile syntheses and support the broader development of such approaches.

#### **Task 3.2.2 Stronger dialogs are established with stakeholders, especially natural resource managers**

Many natural resource managers are now acutely aware of the dangers that global change may pose for ecosystem services via changes in the abundance and distribution of species. Biodiversity modellers have a broad range of models that can be used to

help develop adaptive management strategies in the face of global change. However, modellers must be very careful to explain the full scope of uncertainty in their scenarios and managers should be given greater opportunity to use their expertise to identify key strengths and weaknesses in current modelling approaches. bioDISCOVERY is currently exploring funding opportunities for a series of workshops that would bring together researchers and natural resource managers from terrestrial, freshwater and marine ecosystems to share insights into the use of biodiversity scenarios as an aide in guiding decision making. This research will be at the heart of a long-term collaboration with the bioSUSTAINABILITY Core Project to develop decision tools for biodiversity protection and management.



© M Donoghue

### BOX 3.1 Lexicon of models of biodiversity response to global change

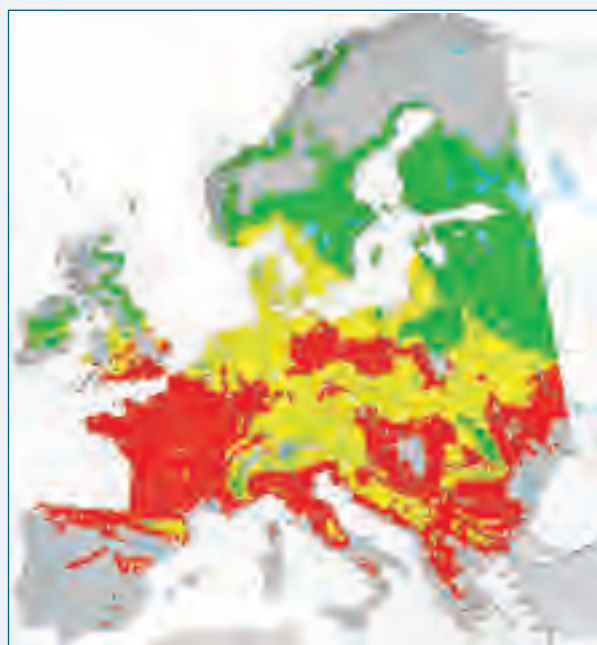
Models of the response of biodiversity to global change differ radically in their basic assumptions, their spatial and temporal scale, and the types of biodiversity that they treat (e.g., plants vs. animals, terrestrial vs. aquatic, genotypic vs. species vs. functional groups). Descriptions of a few examples of these models are given below.

**Gene flow models** simulate the flow of genes within and among populations (see 134 for review). These models can be combined with models of population demography to simulate the long-term viability of populations in response to human disturbances such as habitat fragmentation. More recently these models have been adapted to explore the genetic and phenotypic adaptation of species to climate change (A. Kramer, pers. comm.). Few other types of models account for the possible adaptation of plants and animals to a changing environment. These models are, however, difficult to parameterise and test for more than a few species and generally have very limited representations of the functional response of plants or animals to their environment.

**Niche-based models** are based on statistical relationships between spatial distributions, usually of species, and key environmental factors controlling their distribution such as temperature, rainfall, soil type, etc. (12, 53, 67, 94). The resulting model of the environmental niche can be used to simulate past or future distributions of plants or animals when combined with models of environmental drivers. This approach is powerful because it can be used for any species (or genotype, functional group, etc.) for which there are maps of their distribution and corresponding environmental drivers. Limitations of these models generally include the lack of species migration, interspecific interactions, key environmental factors controlling distributions (such as atmospheric CO<sub>2</sub> concentrations for plants), or adaptation.

**Forest gap-dynamic models** simulate the dynamics of species succession in forests using empirical relationships describing the growth and regeneration of tree species in gaps created by the death or removal of trees. These models have been relatively successfully used to reproduce past and current species composition of temperate forests and therefore are powerful tools for simulating the effects of global change on temperate tree species. They have been less successful in describing species dynamics in tropical forests where a variety of other models including “neutral” models have been applied. There are currently a variety of efforts to improve the representation of the functional response of trees to global change and to simulate mortality and migration in gap-dynamic models (119).

**Dynamic Global Vegetation Models (DGVMs)** are used to simulate the distribution of plant functional groups at the scales from large regions to the globe (43, 44, 84). They are based on mechanistic descriptions of plant and ecosystem functioning (physiology, competition, disturbance, mortality). The strength of this approach is that it simulates the distribution of major plant types and the functioning of plants and ecosystems, including major agricultural crops, as a function of relevant climatic variables as well as of atmospheric CO<sub>2</sub> and human land use. The very small number of plant functional types (often less than 10 for the entire planet) and absence of animals currently prohibits their use for directly modelling distributions of species or species richness. DGVMs have, however, been used in combination with empirical dose-response models (3) or relationships between species number and biome area to estimate changes in species richness or abundance at large spatial scales (29), and are more recently being used to provide “habitat” models for animal distributions.



#### Niche-based model projections of climate change impacts on European beech

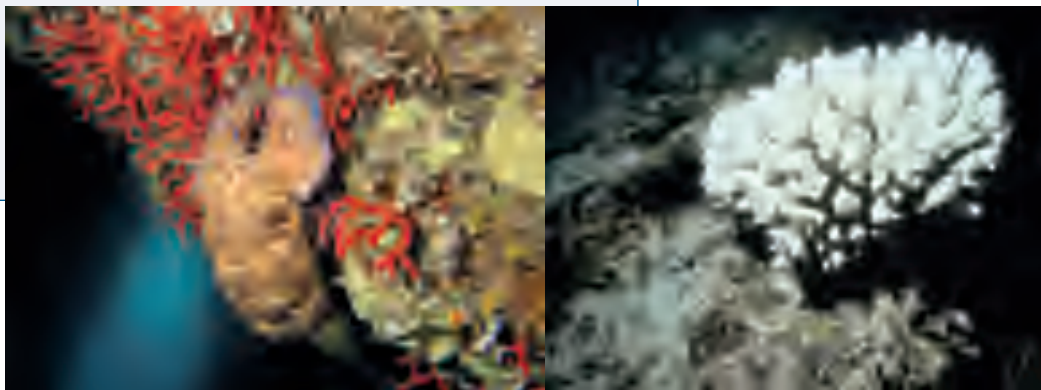
Projected response of European beech (*Fagus sylvatica*) to 21<sup>st</sup> century climate change using Hadley climate model projections for the IPCC A1 emissions scenario and the BIOMOD niche-based model (139). Red = current portion of range where climate becomes unsuitable by 2080, Green = new areas where climate becomes suitable, Yellow = climate suitable now and in 2080. Graphics courtesy of Wilfried Thuiller.

### BOX 3.2 Biodiversity and extreme climatic events

The vast majority of models of the impacts of climate change on biodiversity have focused on the effects of long-term climatic trends. There is growing concern that the occurrence of extreme climatic events such as drought, extreme ocean temperatures and hurricanes may increase in the future and that these events will play an important role in driving mortality. Examples of this include the recent episodes of severe coral reef bleaching due to extreme sea surface temperature anomalies (73) or forest dieback in temperate forests due to extreme heat and drought (22, 23). Extreme climatic events pose two challenges for biodiversity modellers.

First, extreme climatic events are difficult to model because of their very nature of being rare events in space or in time. The simulation of extreme events is an area of active research within the climate community, but much of the most recent work has not yet been used by the biodiversity modelling community. Progress in simulating the response of genotypes, species or functional groups to extreme events depends on strengthening the dialog between climate and biodiversity modellers, especially since an in-depth understanding of the uncertainties associated with models of extreme climatic events is necessary to use and interpret them correctly.

Second, many biodiversity models are not designed to handle extreme events. In particular, the statistical relationships between distribution and climate in niche-based models are typically based on long-term averages of climate and distribution making them difficult to apply to extreme climatic events. Models such as forest gap-dynamic models or DGVMs contain the mechanisms to account for some types of extreme events on trees or plant functional groups, but have very limited applications for predicting biodiversity responses outside a relatively limited number of tree species or plant functional groups. Several novel types of models are now under development that would provide the mechanisms to simulate the response of a large number of species or functional groups to extreme events.



Left: "healthy" red coral and Mediterranean slipper lobster in the Mediterranean Sea.

Right: bleached coral near the island of Moorea, Polynesia, following an extreme sea surface temperature anomaly,

©CNRS Photothèque/J G Harmelin, ©CNRS Photothèque/Y Chancerelle



## III

### Management Structure

The activities of the bioDISCOVERY Core Project are overseen by a Scientific Committee (SC), the SC-bioDISCOVERY, appointed by the DIVERSITAS Scientific Committee. Duties of the SC-bioDISCOVERY include:

- Engaging the international community worldwide in embracing the goals of bioDISCOVERY, and implementing them,
- Providing scientific guidance in the development and implementation of bioDISCOVERY, especially in stimulating the development of research networks and activities centred around the focal areas and tasks outlined in this Science Plan,
- Linking bioDISCOVERY activities to the other Core Projects and Cross-cutting Networks of DIVERSITAS and to other relevant national and international programmes,
- Encouraging governments, regional funding agencies and other donors to support bioDISCOVERY related research at national, regional, and international levels,
- Providing expert advice on the formulation of biodiversity policy and conservation management.

### International Project Office

The activities of bioDISCOVERY are supported through the bioDISCOVERY International Project Office (IPO), currently hosted by the DIVERSITAS Secretariat in Paris, France. Along with the SC-bioDISCOVERY members, the IPO is responsible for engaging the international community in bioDISCOVERY, establish networks, coordinate activities, and monitor progress in the implementation of bioDISCOVERY worldwide. The results of bioDISCOVERY activities are communicated through reports, publications, and the DIVERSITAS website ([www.diversitas-international.org](http://www.diversitas-international.org)).

### bioDISCOVERY Activities

In its start-up phase (2007-2008), bioDISCOVERY has initiated a number of activities to start implementation.

Work on “Strengthening biodiversity assessments” (**Focus 1**) has been initiated with the preparation of a white paper by SC-bioDISCOVERY and SC-DIVERSITAS members on “biodiversity targets after 2010”. The paper will contribute to the preparation of documentation for CBD meetings planned for 2010, including COP10. In addition, SC-bioDISCOVERY members have been closely associated with the development of the Intergovernmental Science-Policy Platform on Biodiversity and Ecosystem Services (IPBES).

Work on “Improving observation and understanding of biodiversity change” (**Focus 2**) has been initiated with activities guided by SC-bioDISCOVERY members in the context of GEO BON. These have included participation in GEO BON interim steering committee meetings, in production of the



GEO BON concept document and GEO BON overview implementation document (accepted by GEO V plenary, Nov 2008), and in leading the publication of a vision article on GEO BON (129). The role of bioDISCOVERY in GEO BON is to ensure that it develops within a robust scientific framework, and that the science necessary for its implementation gets produced.

Work on “Improving biodiversity projections” (**Focus 3**) has been initiated for several of the tasks:

- SC-bioDISCOVERY members have been selected by the Secretariat of the Convention on Biological Diversity to perform a synthesis and critical analysis of existing global and regional biodiversity scenarios as a contribution to GBO-3 (3<sup>rd</sup> Global Biodiversity Outlook). The synthesis will focus on biodiversity at the biome, functional group and species levels (**Research Task 3.1**).
- bioDISCOVERY is contributing to an assessment of the impacts of biofuels on biodiversity in initiatives led by SCOPE and ESSP partners (**Task 3.1.2**).
- bioDISCOVERY is currently collaborating with the Global Land Project of IGBP and IHDP, to develop a new generation of vegetation models that include a broader range of species or species groups and/or improved representations of mortality and migration (“Biome Boundary Shift” initiative). This effort is strongly tied to the IGBP/DIVERSITAS Plant Functional Classification initiative, which will provide some of the key plant trait data (TRY network) necessary for the parameterisation of these models (**Task 3.1.4**).

- bioDISCOVERY will also sponsor “brainstorming” workshops on novel approaches to modelling biodiversity response. In addition, coordinated efforts with the bioGENESIS Core Project aim to strengthen ties between groups working on models that can account for rapid evolutionary responses to global change (**Task 3.1.4**).

In its current phase, SC-bioDISCOVERY members are committed to leading a variety of activities associated to the focal areas and specific tasks described in the Science Plan. However, the bulk of the work will be performed by scientists around the world inspired by this document.



© C Kömer

## Getting involved

There are many ways to participate in DIVERSITAS and to support the activities of the bioDISCOVERY Core Project, as an individual scientist, through the establishment or participation in a National Committee, or as a funder.

The activities highlighted above are meant only to provide examples of projects that might be carried out in connection with bioDISCOVERY. We encourage scientists to propose additional activities that support the goals outlined in the bioDISCOVERY Science Plan including:

- Proposals for collaborative research or educational initiatives,
- Meetings, symposia, and workshops, and
- Synthetic activities and products, including databases and web resources.


bioDISCOVERY also welcomes requests for the endorsement of activities that embrace its goals. Such proposals should be submitted in the early planning stages of the event or initiative. We welcome your involvement in fulfilling the mission of bioDISCOVERY!

## IV

1. Aguilar-Amuchastegui N and Henebry GM. 2006. Monitoring sustainability in tropical forests: How changes in canopy spatial pattern can indicate forest stands for biodiversity surveys. *IEEE Geoscience and Remote Sensing Letters* 3: 329-333
2. Alcamo J et al. 2005. *Ecosystems and human well-being: A framework for assessment*. Island Press, Washington, D.C., USA
3. Alkemade R, van Oorschot M, Nellemann C, Miles L, Bakkenes M, and ten Brink B. (in press) GLOBI03: A Framework to investigate options for reducing global terrestrial biodiversity loss. *Ecosystems*
4. Anderson BJ, Akçakaya HR, Araújo MB, Fordham D, Martinez-Meyer E, Pearson R, Thuiller W, Brook B. 2009. Dynamics of range margins for metapopulations under climate change. *Proceedings of the Royal Society London B*. In press
5. Anonymous. 2007. Are we putting tigers in our tanks? *Conservation* 8: 40-41
6. Anonymous. 2007. *Biological Collection Access Services (BioCASE)*. <http://www.biocase.org/>
7. Anonymous. 2007. *CBD: Convention on Biological Diversity*. <http://www.cbd.int/default.shtml>
8. Anonymous. 2007. *Consultative process towards an IMoSEB: International Mechanism of Scientific Expertise on Biodiversity*. <http://www.imoseb.net/>
9. Anonymous. 2007. *GBIF: Global Biodiversity Information Facility*. <http://www.gbif.org/>
10. Anonymous. 2007. Global Earth Observation System of Systems (GEOSS). <http://www.epa.gov/geoss/>
11. Anonymous. RAMAS RapidList: Preliminary RedList assessment tool. [www.ramas.com/RapidList.htm](http://www.ramas.com/RapidList.htm)
12. Araújo MB and New M. 2006. Ensemble forecasting of species distributions. *Trends in Ecology and Evolution* 22: 42-47
13. Araújo MB, Thuiller W and Pearson RG. 2006. Climate warming and the decline of amphibians and reptiles in Europe. *Journal of Biogeography* 33: 1712-1728
14. Baillie JEM, Bennun LA, Brooks TM, Butchart SHM, Chanson JS, Cokeliss Z, Hilton-Taylor C, Hoffmann M, Mace GM, Mainka SA, Pollock CM, Rodrigues AS, Stattersfield AJ and Stuart SN. 2004. A global species assessment. IUCN Species Survival Commission, Gland, Switzerland
15. Balmford A, Bennun L, ten Brink B, Cooper D, Côté I, Crane P, Dobson A, Dudley N, Dutton I, Green RE, Gregory RD, Harrison J, Kennedy ET, Kremen C, Leader-Williams N, Lovejoy TE, Mace G, May R, Mayaux P, Morling P, Phillips J, Redford K, Ricketts TH, Rodríguez JP, Sanjayan M, Schei PJ, van Jaarsveld AS and Walther BA. 2005. The Convention on Biological Diversity's 2010 target. *Science* 307: 212-213
16. Balmford A, Green RE and Scharlemann JPW. 2005. Sparing land for nature: exploring the potential impact of changes in agricultural yield on the area needed for crop production. *Global Change Biology* 11: 1594-1605
17. Bani L, Massimino D, Bottoni L and Massa R. 2006. A multiscale method for selecting indicator species and priority conservation areas: A case study for broadleaved forests in Lombardy, Italy. *Conservation Biology* 20: 512-526
18. Becker T and Jürgens N. 2000. Vegetation along climate gradients in Kaokoland, North-West Namibia. *Phytocoenologia* 30: 543-565
19. Bennun L, Matiku P, Mulwa R, Mwangi S and Buckley P. 2005. Monitoring important bird




- areas in Africa: Towards a sustainable and scaleable system. *Biodiversity and Conservation* 14: 2575-2590
20. BIOTA-AFRICA. 2007. *BIOdiversity Monitoring Transect Analysis in Africa*. <http://www.biota-africa.org/>
  21. Bonada N, Vives S, Rieradevall M and Prat N. 2005. Relationship between pollution and fluctuating asymmetry in the pollution-tolerant caddisfly *Hydropsyche exocellata* (Trichoptera, Insecta). *Archiv für Hydrobiologie* 162: 167-185
  22. Breda N, Huc R, Granier A and Dreyer E. 2006. Temperate forest trees and stands under severe drought: a review of ecophysiological responses, adaptation processes and long-term consequences. *Annals of Forest Science* 63: 625-644
  23. Breshears DD, Cobb NS, Rich PM, Price KP, Craig D, Allen CD, Balice RG, Romme WH, Kastens JH, Floyd ML, Belnap J, Anderson JJ, Myers OB and Meyer CW. 2005. Regional vegetation die-off in response to global-change-type drought. *Proceedings of the National Academy of Science USA* 102: 15144 -15148
  24. Brugiere D, Badjinca I, Silva C, Serra A and Barry M. 2006. On the road to extinction? The status of elephant *Loxodonta africana* in Guinea Bissau and western Guinea, West Africa. *Oryx* 40: 442-446
  25. Buckland ST, Magurran AE, Green RE and Fewster RM. 2005. Monitoring change in biodiversity through composite indices. *Philosophical Transactions of the Royal Society of London B* 360: 243-254
  26. Butchart SHM, Akçakaya HR, Chanson J, Baillie JEM, Collen B, Quader S, Turner WR, Amin R, Stuart SN and Hilton-Taylor C. 2007. Improvements to the Red List Index. *Public Library of Science Biology One* 2(1): e140
  27. Butchart SHM, Stattersfield AJ, Bennun LA, Shutes SM, Akçakaya HR, Baillie JEM, Stuart SN, Hilton-Taylor C and Mace GM. 2004. Measuring global trends in the status of biodiversity: Red list indices for birds. *Public Library of Science Biology* 2, 1-11
  28. Butler SJ, Vickery JA and Norris K. 2007. Farmland biodiversity and the footprint of agriculture. *Science* 315: 381-384
  29. Carpenter SR et al.. 2005. *Ecosystems and human well-being. Volume 2: Scenarios*. Island Press, Washington, D.C., USA
  30. Carpenter SR, DeFries R, Dietz T, Mooney HA, Polasky S, Reid WV and Scholes RJ. 2006. Millennium Ecosystem Assessment: Research needs. *Science* 314: 257-258
  31. CBD, 2006. Global Biodiversity Outlook 2. CBD Montreal, Canada
  32. CBD. 2003. *Proposed indicators relevant to the 2010 target*. Convention on Biological Diversity, Montreal, Canada. <http://www.cbd.int/doc/meetings/sbstta/sbstta-09/information/sbstta-09-inf-26-en.pdf>
  33. Chan KMA, Shaw MR, Cameron DR, Underwood EC and Daily GC. 2006. Conservation planning for ecosystem services. *Public Library of Science Biology* 4: 2138-2152
  34. Clegg SM, Kelly JF, Kimura M and Smith TB. 2003. Combining genetic markers and stable isotopes to reveal population connectivity and migration patterns in a Neotropical migrant, Wilson's Warbler (*Wilsonia pusilla*). *Molecular Ecology* 12: 819-830
  35. Coiffait L, Bevan R, Redfern C, Newton J and Wolff K. 2006. Elucidating the movements of migratory birds through the combined use of stable isotope 'signatures' and DNA markers. Pp. 506-507 in: Boere GC, Galbraith CA and Stroud DA (eds.). *Waterbirds around the world*. The Stationary Office, Edinburgh, UK
  36. Cook JH, Beyea J and Keeler KH. 1991. Potential impacts of biomass production in the United States on biological diversity. *Annual Review of Energy and the Environment* 16: 401-431


- 
37. Cornelissen J, Lavorel S, Garnier E, Diaz S, Buchmann N, Gurevich D, Reich P, ter Steege H, Morgan HD, van der Heijden MGA, Pausas JG and Porter H. 2003. Handbook of protocols for standardised and easy measurement of plant functional traits worldwide. *Australian Journal of Botany* 51:335-380
38. Corstanje R, Reddy KR, Prenger JP, Newman S and Ogram AV. 2007. Soil microbial eco-physiological response to nutrient enrichment in a sub-tropical wetland. *Ecological Indicators* 7: 277-289
39. Cortet J, Gomot-De Vauflery A, Poinso-Balaguer N, Gomot L, Texier C and Cluzeau D. 1999. The use of invertebrate soil fauna in monitoring pollutant effects. *European Journal of Soil Biology* 35: 115-134
40. Cousins SAO, Lavorel S and Davies I. 2003. Modelling the effects of landscape pattern and grazing regimes on the persistence of plant species with high conservation value in grasslands in south-eastern Sweden. *Landscape Ecology* 18: 315-332
41. CPR. 2007. *Continuous Plankton Recorder Survey*. <http://www.sahfos.ac.uk/>
42. Craine JM, Battersby J, Elmore AJ and Jones AW. 2007. Building EDENs: The rise of environmentally distributed ecological networks. *BioScience* 57: 45-54
43. Cramer W, Bondeau A, Schaphoff S, Lucht W, Smith B and Sitch S. 2004. Tropical forests and the global carbon cycle: Impacts of atmospheric CO<sub>2</sub>, climate change and rate of deforestation. *Philosophical Transactions of the Royal Society of London B* 359:331-343, doi: 10.1098/rstb.2003.1428
44. Cramer W, Bondeau A, Woodward FI, Prentice IC, Betts RA, Brovkin V, Cox PM, Fisher V, Foley JA, Friend AD, Kucharik C, Lomas MR, Ramankutty N, Sitch S, Smith B, White A and Young-Molling C. 2001. Global response of terrestrial ecosystem structure and function to CO<sub>2</sub> and climate change: results from six dynamic global vegetation models. *Global Change Biology* 7: 357-373
45. Dahl TE. 2000. *Status and trends of wetlands in the conterminous United States 1986 to 1997*. U.S. Department of the Interior, Fish and Wildlife Service, Washington, D.C. [http://training.fws.gov/library/Pubs9/wetlands/86-97\\_highres.pdf](http://training.fws.gov/library/Pubs9/wetlands/86-97_highres.pdf)
46. Danielsen F, Burgess N and Balmford A. 2005. Monitoring matters: Examining the potential of locally-based approaches. *Biodiversity and Conservation* 14: 2507-2542
47. Davidson NC and Finlayson CM. 2007. Earth Observation for wetland inventory, assessment and monitoring. *Aquatic Conservation: Marine and Freshwater Ecosystems* 17: 219-228
48. Diaz S, Lavorel S, de Bello F, Quéfier F, Grigulis K and Robson TM. 2007. Incorporating plant functional diversity effects in ecosystem service assessments. *Proceedings of the National Academy of Science USA* 104: 20689-20689
49. DIWPA. 2007. *DIWPA: DIVERSITAS in Western Pacific and Asia*. <http://www.diwpa.ecology.kyoto-u.ac.jp/>
50. Dobson A. 2005. Monitoring global rates of biodiversity change: challenges that arise in meeting the Convention on Biological Diversity (CBD) 2010 goals. *Philosophical Transactions of the Royal Society of London B* 360: 229-241
51. Duchev Z, Distl O and Groeneveld E. 2006. Early warning system for loss of diversity in European livestock breeds. *Archiv für Tierzucht (Archives of Animal Breeding)* 49: 521-531
52. ECNC. 2007. *European Centre for Nature Conservation: BioScore*. <http://www.ecnc.org/jump/page/542/Overview.html>
53. Elith J, Graham CH, Anderson RP, Dudík M, Ferrier S, Guisan A, Hijmans RJ, Huettmann FL, J.R., Lehmann A, Li J, Lohmann LG, Loiselle BA,


- Manion G, Moritz C, Nakamura M, Nakazawa Y, Overton JMM, Peterson AT, Phillips SJ, Richardson K, Scachetti-Pereira R, Schapire RE, Soberón-Mainero J, Williams S, Wisz MS and Zimmermann NE. 2006. Novel methods improve prediction of species' distributions from occurrence data. *Ecography* 29: 129-151
54. Ernst R, Linsenmair KE and Rodel MO. 2006. Diversity erosion beyond the species level: Dramatic loss of functional diversity after selective logging in two tropical amphibian communities. *Biological Conservation* 133: 143-155
55. Faith DP, Nix HA, Margules CR, Hutchinson MF, Walker P A, West J, Stein JL, Kesteven JL, Allison A and Natera G. 2001. The BioRap Biodiversity Assessment and Planning Study for Papua New Guinea. *Pacific Conservation Biology* 6(4): 279-28
56. Ferreira ME, Ferreira LG, Sano EE and Shimabukuro YE. 2007. Spectral linear mixture modelling approaches for land cover mapping of tropical savanna areas in Brazil. *International Journal of Remote Sensing* 28: 413-429
57. Ferreira NC, Ferreira LG, Huete AR and Ferreira ME. 2007. An operational deforestation mapping system using MODIS data and spatial context analysis. *International Journal of Remote Sensing* 28: 47-62
58. Fleming G, van der Merwe M and McFerreren G. 2007. Fuzzy expert systems and GIS for cholera health risk prediction in southern Africa. *Environmental Modelling & Software* 22: 442-448
59. Forbes VE, Palmqvist A and Bach L. 2006. The use and misuse of biomarkers in ecotoxicology. *Environmental Toxicology and Chemistry* 25: 272-280
60. GEOSS. *The Global Earth Observation System of Systems*. <http://earthobservations.org/index.html>
61. Giri C, Zhu ZL and Reed B. 2005. A comparative analysis of the Global Land Cover 2000 and MODIS land cover data sets. *Remote Sensing of the Environment* 94: 123-132
62. GOOS. *The Global Ocean Observing System*. <http://www.ioc-goos.org/>
63. Gotelli NJ and Ellison AM. 2006. Forecasting extinction risk with nonstationary matrix models. *Ecological Applications* 16: 51-61
64. Green RE, Cornell SJ, Scharlemann JPW and Balmford A. 2005. Farming and the fate of wild nature. *Science* 307: 550-555
65. Grenfell MC, Ellery WN and Preston-Whyte RA. 2005. Wetlands as early warning (eco)systems water resource management. *Water South Africa* 31: 465-471
66. GTOS. 2007. *Global Terrestrial Observing System*. <http://www.fao.org/gtos/>
67. Guisan A and Thuiller W. 2005. Predicting species distribution: offering more than simple habitat models. *Ecology Letters* 8: 993-1009
68. Hansen M, DeFries R, Townshend JRG, Sohlberg R, Dimiceli C and Carroll M. 2002. Towards an operational MODIS continuous field of percent tree cover algorithm: examples using AVHRR and MODIS data. *Remote Sensing of the Environment* 83: 303-319
69. Häuser C. 2004. Global assessment of existing biodiversity - the state of and the challenges for our knowledge database. Pp. 47-53 in: Beck E, Berendsohn W, Boutros M, Denich M, Henle K, Jürgens N, Kirk M and Wolters V (eds.). *Sustainable use and conservation of biological diversity – A challenge for society*. PT-DLR Environmental Research and Technology, Bonn, Germany, Berlin, Germany
70. Heywood VH. 1995. *Global biodiversity assessment*. Cambridge University Press, Cambridge, UK
71. Hill J, Nelson E, Tilman D, Polasky S and Tiffany D. 2006. Environmental, economic, and energetic costs and benefits of biodiesel and



- ethanol biofuels. *Proceedings of the National Academy of Science USA* 103: 11206-11210
72. Hobbie JE, Carpenter SR, Grimm NB, Gosz JR, & Seastadt TR. 2003. The US Long-term Ecological Research Program. *BioScience* 53: 21-32
73. Hoegh-Guldberg O, Mumby PJ, Hooten AJ, Steneck RS, Greenfield P, Gomez E, Harvell CD, Sale PF, Edwards AJ, Caldeira K, Knowlton N, Eakin CM, Iglesias-Prieto R, Muthiga N, Bradbury RH, Dubi A and Hatzioles ME. 2007. Coral reefs under rapid climate change and ocean acidification. *Science* 318: 1737-1742
74. Hooper DU, Chapin FS, Ewel JJ, Hector A, Inchausti P, Lavorel S, Lawton JH, Lodge DM, Loreau M, Naeem S, Schmid B, Setälä H, Symstad AJ, Vandermeer J and Wardle DA. 2005. Effects of biodiversity on ecosystem functioning: A consensus of current knowledge. *Ecological Monographs* 75: 3-35
75. Irwin F and Ranganathan J. 2007. *Restoring nature's capital: an action agenda to sustain ecosystem services*. World Resources Institute, Washington, D.C., USA
76. Jackson J.C.B. 2008. Ecological extinction and evolution in the brave new ocean. *Proceedings of the National Academy of Sciences* DOI: 10.1073/pnas.0802812105
77. Janzen DH. 2004. Setting up tropical biodiversity for conservation through non-damaging use: participation by parataxonomists. *Journal of Applied Ecology* 41: 181-187
78. Jürgens N. 1998. Aspects of botanical biodiversity in Southern African arid regions - an outline of concepts and results. Pp. 53-70 in: Barthlott W and Winiger M (eds.). *Biodiversity: a challenge for development research and policy*. Springer, Berlin, Germany
79. Jürgens N. 2006. Recent change of flora and vegetation in Namibia. Pp. in: Leser H (eds.). *The changing culture and nature of Namibia: case studies. The Sixth Namibia Workshop Basel 2005. In honour of Dr. h.c. Carl Schlettwein (1925 – 2005)*. Publishing House Basler Afrika Bibliographien, Basel – Windhoek
80. Kasangaki A, Babaasa D, Efitre J, McNeilage A and Bitariho R. 2006. Links between anthropogenic perturbations and benthic macroinvertebrate assemblages in afro-montane forest streams in Uganda. *Hydrobiologia* 563: 231-245
81. Katzner T, Milner-Gulland EJ and Bragin E. 2007. Using modelling to improve monitoring of structured populations: Are we collecting the right data? *Conservation Biology* 21: 241-252
82. Keith DA, Akçakaya HR, Thuiller W, Midgley GF, Pearson RG, Phillips SJ, Regan HM, Araújo MB and Rebelo TG. 2008. Predicting extinction risks under climate change: coupling stochastic population models with dynamic bioclimatic habitat models. *Biology Letters* doi:10.1098/rsbl.2008.0049
83. Klaper R and Thomas MA. 2004. At the crossroads of genomics and ecology: The promise of a canary on a chip. *BioScience* 54: 403-412
84. Kleidon A and Mooney HA. 2000. A global distribution of biodiversity inferred from climatic constraints: results from a process-based modelling study. *Global Change Biology* 6: 507-523
85. Kshatriya M, Cosner C and van Jaarsveld AS. 2001. Early detection of declining populations using floor and ceiling models. *Journal of Animal Ecology* 70: 906-914
86. Latta SC, Ralph CJ and Geupel GR. 2005. Strategies for the conservation monitoring of resident landbirds and wintering neotropical migrants in the Americas. *Ornitologia Neotropical* 16: 163-174
87. Laurance WF. 2007. Switch to corn promotes Amazon deforestation. *Science* 318: 1721

- 
88. Lavorel S and Garnier E. 2002. Predicting changes in community composition and ecosystem functioning from plant traits: revisiting the Holy Grail. *Functional Ecology* 16: 545-556
  89. Leyequien E, Verrelst J, Slot M, Schaepman-Strub G, Heitkonig IMA and Skidmore A. 2007. Capturing the fugitive: Applying remote sensing to terrestrial animal distribution and diversity. *International Journal of Applied Earth Observation and Geoinformation* 9: 1-20
  90. Loarie SR, Joppa LN and Pimm SL. 2007. Satellites miss environmental priorities. *Trends in Ecology and Evolution* 22: 630-632
  91. Loh J, Green RE, Ricketts T, Lamoreux J, Jenkins M, Kapos V and Randers J. 2005. The Living Planet Index: using species population time series to track trends in biodiversity. *Philosophical Transactions of the Royal Society of London B* 360: 289-295
  92. Loreau M, Oteng-Yeboah A, Arroyo MTK, Babin D, Barbault R, Donoghue M, Gadgil M, Häuser C, Heip C, Larigauderie A, Ma K, Mace G, Mooney HA, Perrings C, Raven P, Sarukhan J, Schei P, Scholes RJ and Watson RT. 2006. Diversity without representation. *Nature* 442: 245-246
  93. Luck GW, Daily GC and Ehrlich PR. 2003. Population diversity and ecosystem services. *Trends in Ecology and Evolution* 18: 331-336
  94. Lütolf M, Kienast F and Guisan A. 2006. The ghost of past species occurrence: improving species distribution models for presence-only data. *Journal of Applied Ecology* 43: 802-815
  95. Mace GM, Masundire H and Baillie JEM. Washington DC: Island Press; 2005. Biodiversity. Chapter 4 in: *Millennium Ecosystem Assessment, 2005 Current state and trends: findings of the condition and trends working group. Ecosystems and human well-being, vol 1*. Island Press.
  96. Madoffe S, Hertel GD, Rodgers P, O'Connell B and Killenga R. 2006. Monitoring the health of selected eastern arc forests in Tanzania. *African Journal of Ecology* 44: 171-177
  97. McCloy KR and Lucht W. 2004. Comparative evaluation of seasonal patterns in long time series of satellite image data and simulations of a global vegetation model. *IEEE Transactions on Geoscience and Remote Sensing* 42: 140-153
  98. Midgley G, Hannah L, Millar D, Rutherford MC and Powrie LW. 2002. Assessing the vulnerability of species richness to anthropogenic climate change in a biodiversity hotspot. *Global Ecology and Biogeography* 11: 445-451
  99. Millennium Ecosystem Assessment, 2005. *Ecosystems and Human Well-being: Synthesis*. Island Press, Washington, DC
  100. Naidoo R and Ricketts TH. 2006. Mapping the economic costs and benefits of conservation. *Public Library of Science Biology* 4: 2153-2164
  101. Naidoo R, Balmford A, Ferraro PJ, Polasky S, Ricketts TH and Rouget M. 2006. Integrating economic costs into conservation planning. *Trends in Ecology and Evolution* 21: 681-687
  102. Nee S. 2004. More than meets the eye – Earth's real biodiversity is invisible, whether we like it or not. *Nature* 429: 804
  103. Niemi GJ and McDonald ME. 2004. Application of ecological indicators. *Annual Review of Ecology, Evolution and Systematics* 35: 89-111
  104. Oberdorff T, Guégan JF and Hugueny B. 1995. Global scale patterns of fish species richness in rivers. *Ecography* 18: 345-352
  105. Oborny B, Meszner G and Szabo G. 2005. Dynamics of populations on the verge of extinction. *Oikos* 109: 291-296
  106. Pain DJ, Green RE, Gießing B, Kozulin A, Poluda A, Ottosson U, Flade M and Hilton GM. 2004. Using stable isotopes to investigate migratory connectivity of the globally threatened aquatic warbler *Acrocephalus paludicola*. *Oecologia* 138: 168-174

- 
107. Parr TW, Ferretti M, Simpson I, Forsius M and Kovacs-Lang E. 2002. Towards a long-term integrated monitoring programme in Europe: Network design in theory and practice. *Environmental Monitoring and Assessment* 78: 253-290
108. Parr TW, Sier ARJ, Battarbee RW, Mackay A and Burgess J. 2003. Detecting environmental change: science and society - perspectives on long-term research and monitoring in the 21st century. *Science of the Total Environment* 310: 1-8
109. Pauly D, Christensen V and Walters C. 2000. Ecopath, Ecosim and Ecospace as tools for evaluating ecosystem impact of fisheries. *ICES Journal of Marine Science* 57: 697-706
110. Pearson, RG, Thuiller W, Araújo MB, Martinez E, Brotons L, McClean C, Miles L, Segurado P, Dawson T and Lees D. 2006. Model-based uncertainty in species' range prediction. *Journal of Biogeography* 33: 1704-1711
111. Pereira HM and Cooper HD. 2006. Towards the global monitoring of biodiversity change. *Trends in Ecology and Evolution* 21: 123-129
112. Peres CA, Barlow J and Laurance WF. 2006. Detecting anthropogenic disturbance in tropical forests. *Trends in Ecology and Evolution* 21: 227-229
113. Peterson AT, Sanchez-Cordero V, Martínez-Meyer E and Navarro-Sigüenza AG. 2006. Tracking population extirpations via melding ecological niche modeling with land-cover information. *Ecological Modelling* 195: 229-236
114. Polasky S, Nelson E, Lonsdorf E, Fackler P and Starfield A. 2005. Conserving species in a working landscape: Land use with biological and economic objectives. *Ecological Applications* 15: 1387-1401
115. Powlson DS, Riche AB and Shield I. 2005. Biofuels and other approaches for decreasing fossil fuel emissions from agriculture. *Annals of Applied Biology* 146: 193-201
116. Raghu S, Anderson RC, Daehler CC, Davis AS, Wiedenmann RN, Simberloff D and Mack RN. 2006. Adding biofuels to the invasive species fire? *Science* 313: 1742
117. Raven PH and Wilson EO. 1992. A fifty-year plan for biodiversity surveys. *Science* 258: 1099-1100
118. Read P. 1997. Food, fuel, fibre and faces to feed. Simulation studies of land use change for sustainable development in the 21<sup>st</sup> century. *Ecological Economics* 23: 81-93
119. Rickebusch S, Gellrich M, Lischke H, Guisan A and Zimmermann NE. 2007. Combining probabilistic land-use change and tree population dynamics modelling to simulate responses in mountain forests. *Ecological Modelling* 209: 157-168
120. Rodríguez JP, Balch JK and Rodríguez-Clark KM. 2007. Assessing extinction risk in the absence of species-level data: quantitative criteria for terrestrial ecosystems. *Biodiversity and Conservation* 16: 183-209
121. Rodríguez JP, Rodríguez-Clark KM, Oliveira-Miranda MA, Good T and Grajal A. 2006. Professional capacity building: the missing agenda in conservation priority setting. *Conservation Biology* 20: 1340
122. Rodríguez JP, Simonetti JA, Premoli A and Marini MA. 2005. Conservation in Austral and Neotropical America: building scientific capacity equal to the challenges. *Conservation Biology* 19: 969-972
123. Rouget M, Cowling RM, Pressey RL and Richardson DM. 2003. Identifying spatial components of ecological and evolutionary processes for regional conservation planning in the Cape Floristic Region, South Africa. *Diversity and Distributions* 9: 191-210
124. Rounsevell MDA, Reginster I, Araújo MB and Carter TR DN, Ewert F, House JI, Kankaanpää S, Leemans R, Metzger MJ, Schmit C, Smith Pand Tuck G. 2006. A coherent set of future land use

- 
- change scenarios for Europe. *Agriculture, Ecosystems and Environment* 114: 57-68
125. Santelmann MV, White D, Freemark K, Nassauer JI, Eilers JM, Vache K, Danielson BJ, Corry RC, Clark ME, Polasky S, Cruse RM, Sifneos J, Rustigian H, Coiner C, Wu J and Debinski D. 2004. Assessing alternative futures for agriculture in Iowa, USA. *Landscape Ecology* 19: 357-374
126. Scharlemann JPW, Green RE and Balmford A. 2004. Land-use trends in Endemic Bird Areas: global expansion of agriculture in areas of high conservation value. *Global Change Biology* 10: 2046-2051
127. Schellnhuber HJ, Cramer W, Nakicenovic N, Wigley T and Yohe G. 2006. Avoiding Dangerous Climate Change. Report of a scientific symposium on the stabilisation of greenhouse gases. Cambridge University Press, UK
128. Scholes R. 2004. Towards an integrated global network of biodiversity observatories. Pp. 56-57 in: Beck E, Berendsohn W, Boutros M, Denich M, Henle K, Jürgens N, Kirk M and Wolters V (eds.). *Sustainable use and conservation of biological diversity – A challenge for society*. PT-DLR Environmental Research and Technology, Bonn, Germany, Berlin, Germany
129. Scholes RJ, Mace GM, Turner W, Geller GN, Jürgens N, Larigauderie A, Muchoney D, Walther BA and Mooney HA. 2008. Toward a global biodiversity observing system. *Science* 321(5892):1044-1045
130. Scott MC. 2006. Winners and losers among stream fishes in relation to land use legacies and urban development in the southeastern US. *Biological Conservation* 127: 301-309
131. Sharpe A and Conrad C. 2006. Community based ecological monitoring in Nova Scotia: Challenges and opportunities. *Environmental Monitoring and Assessment* 113: 395-409
132. Singh SP. 2002. Balancing the approaches of environmental conservation by considering ecosystem services as well as biodiversity. *Current Science* 82: 1331-1335
133. Sjöström A and Gross CL. 2006. Life-history characters and phylogeny are correlated with extinction risk in the Australian angiosperms. *Journal of Biogeography* 33: 271-290
134. Sork VL, Campbell D, Dyer R, Fernandez J, Nason J, Petit R, Smouse P, and Steinberg E (eds). 1998. Current approaches: Gene flow on ecological time scales. In: *Proceedings from a Workshop on Gene Flow in Fragmented, Managed, and Continuous Populations*. NCEAS. [www.nceas.ucsb.edu/nceas-web/projects/2057/nceas-paper3/data/Gfpart1.html](http://www.nceas.ucsb.edu/nceas-web/projects/2057/nceas-paper3/data/Gfpart1.html)
135. Steffen W, Andrae MO, Bolin B, Cox PM, Crutzen PJ, Cubasch U, Held H, Nakicenovic N, Scholes RJ, Talaue-McManus L and Turner BL. 2004. Abrupt changes: The Achilles' heels of the Earth System. *Environment* 46: 8-20
136. Tegler B, Sharp M and Johnson MA. 2001. Ecological monitoring and assessment network's proposed core monitoring variables: an early warning of environmental change. *Environmental Monitoring and Assessment* 67: 29-56
137. Thomas CD, Cameron A, Green RE, Bakkenes M, Beaumont LJ, Collingham YC, Erasmus BFN, de Siqueira MF, Grainger A, Hannah L, Hughes L, Huntley B, van Jaarsveld AS, Midgley GF, Miles L, Ortega-Huerta MA, Peterson AT, Phillips OL and Williams SE. 2004. Extinction risk from climate change. *Nature* 427: 145-148
138. Thuiller W, Lavorel S, Araújo MB, Sykes MT and Prentice IC. 2005. Climate change threats to plant diversity in Europe. *Proceedings of the National Academy of Science USA* 102: 8245-8250
139. Thuiller W, Richardson DM, Pysek P, Midgley GF, Hughes GO and Rouget M. 2005. Niche-based



- modelling as a tool for predicting the risk of alien plant invasions at a global scale. *Global Change Biology* 11: 2234-2250
140. Tilman D, Hill J and Lehman C. 2006. Carbon-negative biofuels from low-input high-diversity grassland biomass. *Science* 314: 1598-1600
141. UNEP, 2007. Global Environmental Outlook 4. UNEP, Nairobi, Kenya
142. UNEP-WCMC, 2008. 2010 Biodiversity Indicators Partnership. [www.twentyten.net](http://www.twentyten.net)
143. US-EPA. 2007. *Wetlands: status and trends*. <http://www.epa.gov/OWOW/wetlands/vital/status.html>
144. Van Jaarsveld AS, Pauw JC, Mundree S, Mecenero S, Coetzee BWT and Alard GF. 2007. South African Environmental Observation Network: vision, design and status. *South African Journal of Science* 103, 289- 294
145. Walsh PD, Abernethy KA, Bermejo M, Beyersk R, De Wachter P, Akou ME, Huljbreghis B, Mambounga DI, Toham AK, Kilbourn AM, Lahm SA, Latour S, Maisels F, Mbina C, Mihindou Y, Obiang SN, Effa EN, Starkey MP, Telfer P, Thibault M, Tutin CEG, White LJT and Wilkie DS. 2003. Catastrophic ape decline in western equatorial Africa. *Nature* 422: 611-614
146. Walther BA, Larigauderie A, Ash N, Geller GN, Jürgens N and Lane MA. 2007. Toward a global biodiversity observation network. Pp. 79-81 in: GEO, Group on Earth Observations (eds.). *The Full Picture*. Tudor Rose, Geneva, Switzerland
147. Welk E. 2004. Constraints in range predictions of invasive plant species due to non-equilibrium distribution patterns: Purple loosestrife (*Lythrum salicaria*) in North America. *Ecological Modelling* 179: 551-567
148. Whitelaw G, Vaughan H, Craig B and Atkinson D. 2003. Establishing the Canadian Community Monitoring Network. *Environmental Monitoring and Assessment* 88: 409-418
149. Williams PH, Moore JL, Toham AK, Brooks TM, Strand H, D'Amico J, Wisz M, Burgess ND, Balmford A and Rahbek C. 2003. Integrating biodiversity priorities with conflicting socio-economic values in the Guinean-Congolian forest region. *Biodiversity and Conservation* 12: 1297-1320
150. Zavaleta ES, Shaw MR, Chiariello NR, Mooney HA and Field CB. 2003. Additive effects of simulated climate changes, elevated CO<sub>2</sub>, and nitrogen deposition on grassland diversity. *Proceedings of the National Academy of Science USA* 100: 7650-7654

## Acknowledgements

### V

This bioDISCOVERY Science Plan and Implementation Strategy is the product of a major co-operative effort.

DIVERSITAS would like to thank the members of the original scoping team, who provided initial input for this document:

**Mary Kalin Arroyo**, Universidad of Chile, Chile • **Pieter Baas**, National Herbarium Netherlands, The Netherlands • **Nancy F. Bockstal**, University of Maryland, USA • **Julian Caley**, Australian Institute of Marine Science • **Gerardo Ceballos Gonzalez**, Universidad Nacional Autonoma de Mexico, Mexico • **Jorge V. Cristi**, Museo del La Plata, Argentina • **Lee A. Fitzgerald**, Texas A&M University, USA • **Christoph L. Häuser**, Staatliches Museum für Naturkunde, Germany • **Carlos Heip**, Centre for Estuarine and Coastal Ecology, The Netherlands • **Da-Wei Huang**, Chinese Academy of Sciences, China • **Anne Larigauderie**, DIVERSITAS • **Norbert Jürgens**, University of Hamburg, Germany • **Rik Leemans**, National Institute of Public Health and the Environment, The Netherlands • **Michel Loreau**, McGill University, Canada • **John G. Lundberg**, Academy of Natural Sciences, USA • **Keping Ma**, The Chinese Academy of Sciences, China • **Susana Magallon**, Universidad Nacional Autonoma de Mexico, Mexico • **Koenraad Martens**, Royal Belgian Institute of Natural Sciences, Belgium • **Titus Mukiyama**, University of Nairobi, Kenya • **Harini Nagendra**, Indiana University, USA • **Charles Perrings**, Arizona State University, USA • **Anne-Hélène Prieur-Richard**, DIVERSITAS • **Jon Paul Rodriguez**, Instituto Venezolano de Investigaciones Cientificas, Venezuela, Chair • **Robert Scholes**, CSIR-Environmentek, South Africa • **Junko Shimura**, National Institute of Environmental Science, Japan • **Susanne Stoll-Kleeman**, Free University of Berlin, Germany • **Vigdis Torsvik**, University of Bergen, Norway • **Allan D. Watt**, ITE Banchory Research Station, United Kingdom.

DIVERSITAS thanks **Jon Paul Rodriguez** and **Tatjana Good** who provided leadership and coordination, respectively, of these earlier efforts.

DIVERSITAS is grateful to **Michel Loreau**, Chair SC-DIVERSITAS (2002-07) who guided earlier stages of this process, and to Members of the Scientific Committee of bioDISCOVERY (2006-08), who built upon the work of the scoping team, finalised the bioDISCOVERY Science Plan and Implementation Strategy, and began implementation:

**Miguel B. Araujo**, Museo Nacional de Ciencias Naturales, Madrid, Spain • **Neville Ash**, IUCN, co-Chair • **Rob Alkemade**, Netherlands Environmental Assessment Agency, The Netherlands • **Gregory P. Asner**, Carnegie Institution, Stanford, USA • **Dominique Bachelet**, Oregon State University, USA • **Mark J. Costello**, University of Auckland, New Zealand • **Max Finlayson**, IWMI, Sri Lanka • **Norbert Jürgens**, University of Hamburg, Germany, co-Chair • **Sandra Lavorel**, Université Joseph Fourier, Grenoble, France • **Paul Leadley**, Université Paris-Sud 11, Orsay, France, co-Chair • **Georgina Mace**, Imperial College, UK • **Harold A. Mooney**, Stanford University, USA • **Terry Parr**, Centre of Ecology and Hydrology, Lancaster Environment Centre, UK • **Robert Scholes**, CSIR-Environmentek, South Africa • **Jorge Soberon**, University of Kansas, USA • **Woody Turner**, NASA Headquarters, USA.



© A Hendry



Finally, DIVERSITAS thanks its members who provided core funding:

- Academia Sinica, China-Taipei
- Federal Ministry of Education, Science and Culture, Austria
- French Ministry of Foreign Affairs (MAE)
- French Ministry of Research (MESR)
- German Federal Ministry of Education and Research (BMBF)
- German Research Foundation (DFG)
- National Council on Science and Technology (CONACYT), Mexico
- National Council for Scientific and Technological Research (CONICET), Argentina
- National Research Foundation (NRF), South Africa
- National Science Foundation (NSF), USA
- Natural Environment Research Council (NERC), UK
- The Netherlands Organisation for Scientific Research (NWO)
- Politique Scientifique Fédérale de Belgique, Belgium
- The Research Council, Norway
- Royal Netherlands Society of Arts and Sciences (KNAW)
- Slovak Academy of Sciences
- Spanish Ministry of Science and Technology (MYCT)
- Swedish Natural Science Research Council (NFR)
- Swiss National Science Foundation (SNF)



© G. Asner

## VI

<b>BioCASE</b>	The Biological Collection Access Service for Europe
<b>CBD</b>	UN Convention on Biological Diversity
<b>CI</b>	Conservation International
<b>DGVM</b>	Dynamic Global Vegetation Model
<b>DIWPA</b>	DIVERSITAS in Western Pacific and Asia
<b>EBONE</b>	European Biodiversity Observation Network
<b>ESSP</b>	Earth System Science Partnership (DIVERSITAS, IGBP, IHDP, WCRP)
<b>GBIF</b>	Global Biodiversity Information Facility
<b>GEO</b>	Group on Earth Observations
<b>GEO BON</b>	Group on Earth Observations Biodiversity Observation Network
<b>GEOS</b>	Global Earth Observation System of Systems
<b>GISP</b>	Global Invasive Species Programme
<b>GLP</b>	Global Land Project (IGBP, IHDP)
<b>GMO</b>	Genetically Modified Organism
<b>ICSU</b>	International Council for Science
<b>IGBP</b>	International Geosphere-Biosphere Programme
<b>IHDP</b>	International Human Dimensions Programme on Global Environmental Change
<b>ILTER</b>	International Long-Term Ecological Research Network
<b>IPBES</b>	Intergovernmental Science-Policy Platform on Biodiversity and Ecosystem Services
<b>IPCC</b>	Intergovernmental Panel on Climate Change
<b>IUBS</b>	International Union of Biological Sciences
<b>IUCN</b>	International Union for Conservation of Nature
<b>MA</b>	Millennium Ecosystem Assessment
<b>MAIRS</b>	Monsoon Asia Integrated Regional Studies
<b>NASA</b>	National Aeronautics and Space Administration
<b>SAHFOS</b>	Sir Alister Hardy Foundation for Ocean Science
<b>SCOPE</b>	Scientific Committee on Problems of the Environment
<b>TERACC</b>	Terrestrial Ecosystem Response to Atmospheric and Climatic Change
<b>UNU</b>	United Nations University
<b>UNESCO</b>	United Nations Educational, Scientific and Cultural Organisation
<b>WCRP</b>	World Climate Research Programme
<b>WWF</b>	World Wide Fund for Nature



© R L Caldwell, Department of Integrative Biology, University of California, Berkeley

## Getting involved...



© J Cracraft

The success of DIVERSITAS is directly related to the voluntary involvement of scientists and organisations from around the world. The following paragraphs briefly describe the primary means of contributing to this dynamic network of integrated biodiversity science. More detailed information is available in the **Getting involved** section of our web site: [www.diversitas-international.org](http://www.diversitas-international.org)

### as a Scientist

DIVERSITAS invites individual scientists to make the Secretariat aware of their ongoing research and to suggest ways to integrate local and international initiatives. The DIVERSITAS Secretariat, as well as the Core Project and Cross-cutting Network offices, welcome proposals for collaborative activities (research projects, workshops, syntheses, etc.) that support the implementation of the DIVERSITAS Science Plan.

### as a National Committee

DIVERSITAS encourages the establishment of National Committees as a means of building a truly international network to support integrated biodiversity science. These Committees play an important role in linking national and international programmes, as well as interacting with policy makers and other stakeholders in their home countries.

### as a Funder

Funding DIVERSITAS initiatives provides an excellent opportunity for individuals and organisations to demonstrate a strong commitment to conservation and sustainable use of biodiversity – issues that often have strong appeal for their own stakeholders and publics. DIVERSITAS welcomes the opportunity to collaborate with private industry, non-governmental/inter-governmental organizations, foundations and associations.

## Our Mission

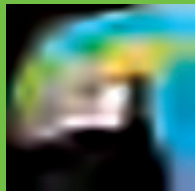
### DIVERSITAS

is an international, non-governmental programme with a dual mission:

- To promote an integrative biodiversity science, linking biological, ecological and social disciplines in an effort to produce socially relevant new knowledge
- To provide the scientific basis for the conservation and sustainable use of biodiversity.

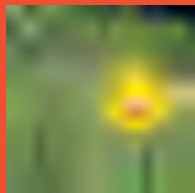
I C S U  
I U B S  
S C O P E  
U N E S C O

Collectively, DIVERSITAS Core Projects comprise a cycle of discovery, analysis and information sharing that supports the application of socially relevant knowledge. The bioDISCOVERY Science Plan complements efforts in related areas of:



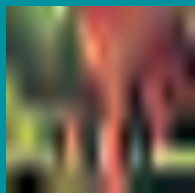
### bioGENESIS

Facilitating the development of new strategies and tools for documenting biodiversity, understanding the dynamics of diversification, and making use of evolutionary biology to understand anthropogenic impacts.



### ecoSERVICES

Exploring the links between biodiversity and ecosystem functions and services that support human well-being; seeking to determine human responses to changes in ecosystem services.



### bioSUSTAINABILITY

Looking at the science-policy interface for ways to support the conservation and sustainable use of biological resources.



## DIVERSITAS

an international programme  
of biodiversity science

DIVERSITAS Secretariat

Muséum National d'Histoire Naturelle (MNHN)

Maison Buffon / 57, rue Cuvier – CP 41 / 75231 Paris, Cedex 05, France

Tel: +33 (0)1 40 79 80 40 / Fax: +33 (0)1 40 79 80 45

secretariat@diversitas-international.org / [www.diversitas-international.org](http://www.diversitas-international.org)